

2500105



Please read all instructions carefully before use and retain for future reference.



Protect your eyes.



CAUTION Do not immerse in water.



Maintain a safe distance from bystanders.



DO NOT use to pick up sticks, stones or similar debris that may cause the chute to become blocked.



Protect your ears.



Do not use in wet conditions.



Protect your eyes.



Disconnect appliance from mains before cleaning, maintenance or after a thermal cut out event.



Protect your hands.



3.56kg

The weight of the Leaf Blower will increase when vacuuming leaves it is advised to use the Safety Strap (10) for support.



For optimal performance it is advised that the Leaf Blower is used on dry leaves.

If used on wet leaves the outlet into the collection bag can become blocked resulting in poor performance.



PRODUCT DISPOSAL INFORMATION For electrical products sold within the European Community, at the end of the electrical product's useful life, it should not be disposed of with household waste. Please recycle where facilities exist. Contact your local authority for details of collection schemes in your area.

In all circumstances:
Do not dispose of in domestic waste.
Do not incinerate.
Do not abandon in the environment.
Do not dispose of WEEE as unsorted municipal waste.



ATTENTION This appliance has a thermal cut out switch. The thermal cut out will activate and shut down the appliance should the appliance overheat.

Unplug from the mains and or battery and allow to cool for **30 minutes** before re-use.

DECLARATION OF CONFORMITY

We

DOMU Brands Ltd
5th Floor The Tower
Deva City Office Park
Manchester
M3 7BF

Declare under our sole responsibility the product:

SKU
2500105

Description

3000W Leaf Blower

Complies with the essential requirements of the following directives:

2014/35/EU
2000/14/EC
2014/30/EU
2011/65/EU

And the Standards **EN 60335-1:2012/A11:2014**, **EN 50636-2-100:2014**, **EN 62233:2008**, **AfPS GS 2014:01 PAK**, **EN ISO 3744:1995**, **EN 55014-1:2006+A1+A2**, **EN 55014-2:2015**, **EN 61000-3-2:2014**, **EN 61000-3-3:2013**,

Authorised Signatory on behalf of DOMU Brands Ltd.

EN

Please read all instructions carefully before use and retain for future reference.

INTENDED USE Only operate the power tool/machine for its intended purpose and within the parameters specified in this manual.

This power tool/machine is for domestic use only.

This power tool/machine is not intended for use by persons with reduced physical, sensory or mental capabilities, or lack of experience and knowledge, unless supervised or given appropriate instruction concerning the product's use by a person responsible for their safety.

GENERAL PRECAUTION Do not allow to be used as a toy. Children should be supervised to ensure they do not play with the power tool/machine.

If the power tool/machine is not functioning properly, has been dropped, damaged, left outdoors, or immersed in liquid, do not use, contact DOMU Brands Customer Services.

Do not use the power tool/machine if any parts appear to be faulty, missing or damaged.

Ensure all parts are securely attached before use.

RISK OF PERSONAL INJURY Avoid body contact with earthed or grounded surfaces such as pipes, radiators, ranges and refrigerators. There is an increased risk of electric shock if your body is earthed or grounded.

Prevent unintentional starting. Ensure the switch is in the off position before connecting to the power source and/or battery pack, picking up or carrying the tool. Carrying power tools with your finger on the switch, or energising power tools that are switched on, invites accidents.

Do not operate power tools in explosive atmospheres such as in the presence of flammable liquids, gases or dust. Power tools create sparks which may ignite the dust or fumes.

Always wear eye protection. Any power tool can throw foreign objects into your eyes and cause permanent eye damage. Always wear safety goggles (not glasses) that comply with ANSI safety standard Z87.1. Every day glasses have only impact resistant lenses.

Do not expose power tools to rain or wet conditions. Water entering the power tools will increase the risk of electric shock.

Stay alert, watch what you are doing and use common sense when operating a power tool/machine. Do not use a power tool/machine while you are tired or under the influence of drugs, alcohol or medication. A moment of inattention while operating power tool/machine may result in serious personal injury.

Use personal protective equipment. Always wear eye protection. Protective equipment such as dust mask, non-skid safety shoes, hard hat, or hearing protection used for appropriate conditions will reduce personal injuries.

Prevent unintentional starting. Ensure the switch is in the off-position before connecting to power source and/or battery pack, picking up or carrying the tool.

Carrying power tool/machine with your finger on the switch or energizing power tool/machine that have the switch on invites accidents.

Remove any adjusting key or spanner before turning the power tool/machine on. A spanner or a key left attached to a rotating part of the power tool/machine may result in personal injury.

Do not overreach. Keep proper footing and balance at all times. This enables better control of the power tool/machine in unexpected situations.

Dress appropriately. Do not wear loose clothing or jewellery.

Keep your hair, clothing and gloves away from moving parts. Loose clothes, jewellery or long hair can be caught in moving parts.

If devices are provided for the connection of dust

extraction and collection facilities, ensure these are connected and properly used. Use of dust collection can reduce dust-related hazards.

WORK AREA SAFETY Keep work area clean and well lit. Cluttered or dark areas invite accidents.

Do not operate power tool/machine in explosive atmospheres, such as in the presence of flammable liquids, gases or dust.

Power tool/machine create sparks which may ignite the dust or fumes.

Keep children and bystanders away while operating a power tool/machine. Distractions can cause you to lose control.

GENERAL POWER TOOL USE AND CARE Do not force the power tool/machine. Use the correct power tool/machine for your application. The correct power tool/machine will do the job better and safer at the rate for which it was designed.

Do not use the power tool/machine if the switch does not turn it on and off. Any power tool/machine that cannot be controlled with the switch is dangerous and must be repaired.

Disconnect the plug from the power source and/or the battery pack from the power tool/machine before making any adjustments, changing accessories, or storing power tool/machine tools. Such preventive safety measures reduce the risk of starting the power tool/machine accidentally.

Store idle power tool/machine out of the reach of children and do not allow persons unfamiliar with the power tool/machine or these instructions to operate the power tool/machine.

Power tool/machines are dangerous in the hands of untrained users.

Maintain power tool/machines. Check for misalignment or binding of moving parts, breakage of parts and any other condition that may affect the power tool/machines operation. If damaged, have the power tool/machines repaired before use. Many accidents are caused by poorly maintained power tool/machines.

Keep cutting tools sharp and clean.

Properly maintained cutting tools with sharp cutting edges are less likely to bind and are easier to control.

Use the power tool/machine accessories and tool bits in accordance with these instructions, take into account the working conditions and the work to be performed.

Use of the power tool/machine for operations different from those intended could result in a hazardous situation.

CLEANING & MAINTENANCE Never soak or immerse electrical components and or a component that has a plug attached.

Disconnect the plug from the power source before making any adjustments, changing accessories, or storing. Such preventive safety measures reduce the risk of starting the power tool accidentally.

Ensure the motor has fully stopped before cleaning, clearing a blockage, checking, or carrying out any maintenance on the tool.

Maintain your power tool. Check for misalignment or binding of moving parts, breakage of parts and any other condition that may affect the power tool's operation. If damaged, have the power tool repaired by a qualified repair person before use. Many accidents are caused by poorly maintained power tools.

Keep cutting tools sharp and clean. Properly maintained cutting tools with sharp cutting edges are less likely to bind and are easier to control.

Regularly check external nuts and fixings to ensure vibration caused by normal use has not begun to loosen them.

Store idle power tools out of reach of children and do not allow persons unfamiliar with the power tool or these instructions to operate the Breaker.

Locate the power tool out of reach of children, in a dry,

locked unit.

Make sure that the cord is located so that it will not be stepped on, tripped over, or otherwise subjected to damage or stress.

Remove the plug from the mains socket / battery (where applicable) before carrying out any adjustment or maintenance.

Always store the power tool/machine in a dry place.

If the power cord is damaged, it must be replaced by a qualified service technician.

Keep the ventilation slots and motor housing as free of dirt and dust as possible (where applicable).

Clean the power tool/machine by rubbing it with a clean cloth and blow it clean using low-pressure compressed air is recommended.

Ensure you have all the pieces listed. If you are missing any components, contact our customer services department at support@domu.co.uk DO NOT proceed with assembly if any components are missing.

GARDEN VACUUMS & BLOWERS

Secure long hair so that it is above shoulder length. Keep loose clothing, ties, tassels and hanging straps away from openings and moving parts.

Do not attempt to pick up burning materials such as lit cigarette ends.

Do not operate in a gaseous or explosive atmosphere as motors in the appliances can spark and may ignite fumes.

Always switch off your product, allow the fan to stop and remove the plug from the socket when:

- Changing from Blower to Vacuum.
- The supply cable has become damaged or entangled.
- The appliance is left unattended.
- Clearing a blockage.
- Checking, adjusting, cleaning or working on the appliance.

- If the appliance starts to vibrate abnormally.
Do not place the inlet or outlet of the Vacuum near eyes or ears when operating. Never blow debris in the direction of bystanders.

Do not use in rainy conditions or leave outdoors while it is raining.

Do not pick up matter that may be contaminated with flammable or combustible liquids such as gasoline, or use in areas where such matter might be present.

Do not place any objects into the openings. Never use if the openings are blocked. Keep free of hair, lint, dust and anything that may reduce the airflow.

Do not carry the appliance by the cable.

Always direct the cable to the rear away from the appliance.

WARNING If a cord becomes damaged during use, disconnect the supply cord from the mains supply immediately. Do not touch the supply cord before disconnecting the supply.

Do not use solvents or cleaning fluids to clean your product. Use a blunt scraper to remove grass and dirt.

Check the Debris Collection Bag frequently for wear or deterioration.

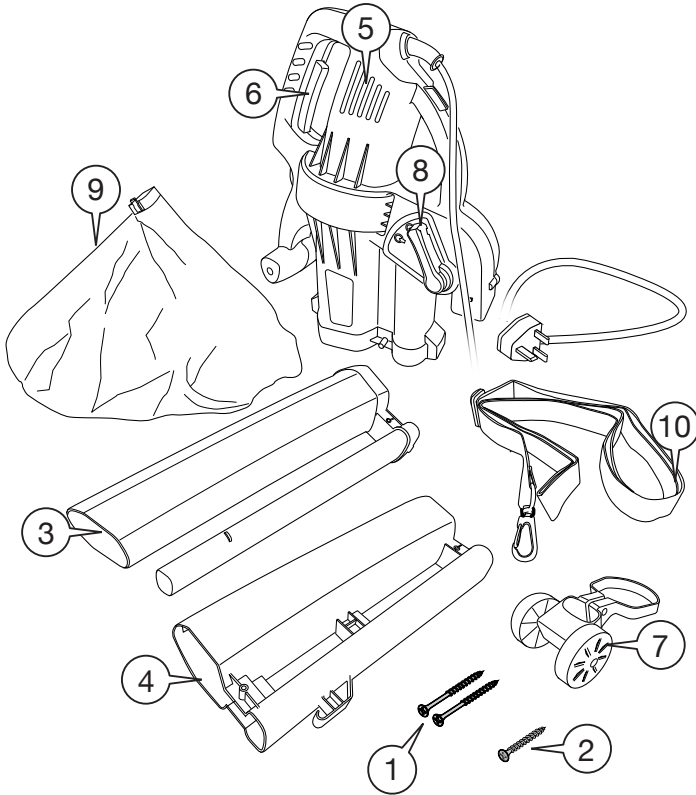
TECHNICAL SPECIFICATION

Rated Voltage 230V ~

Rated Power 3000W

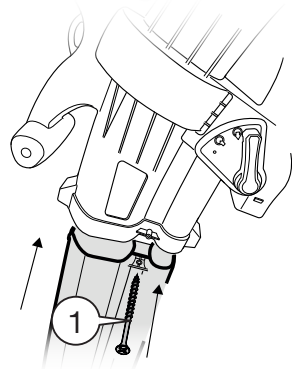
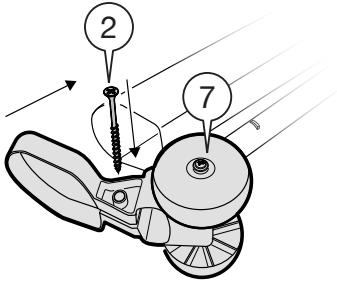
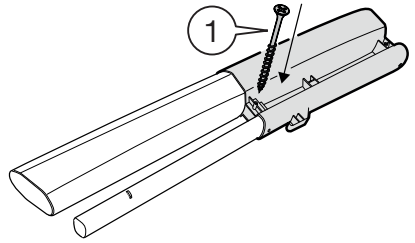
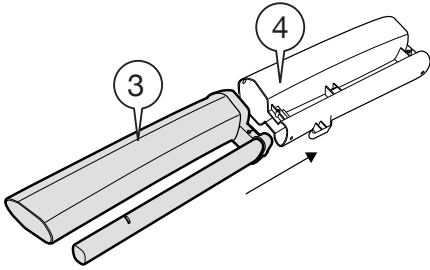
Rated Frequency 50Hz

COMPONENTS

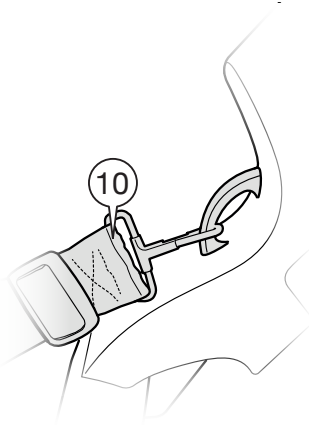


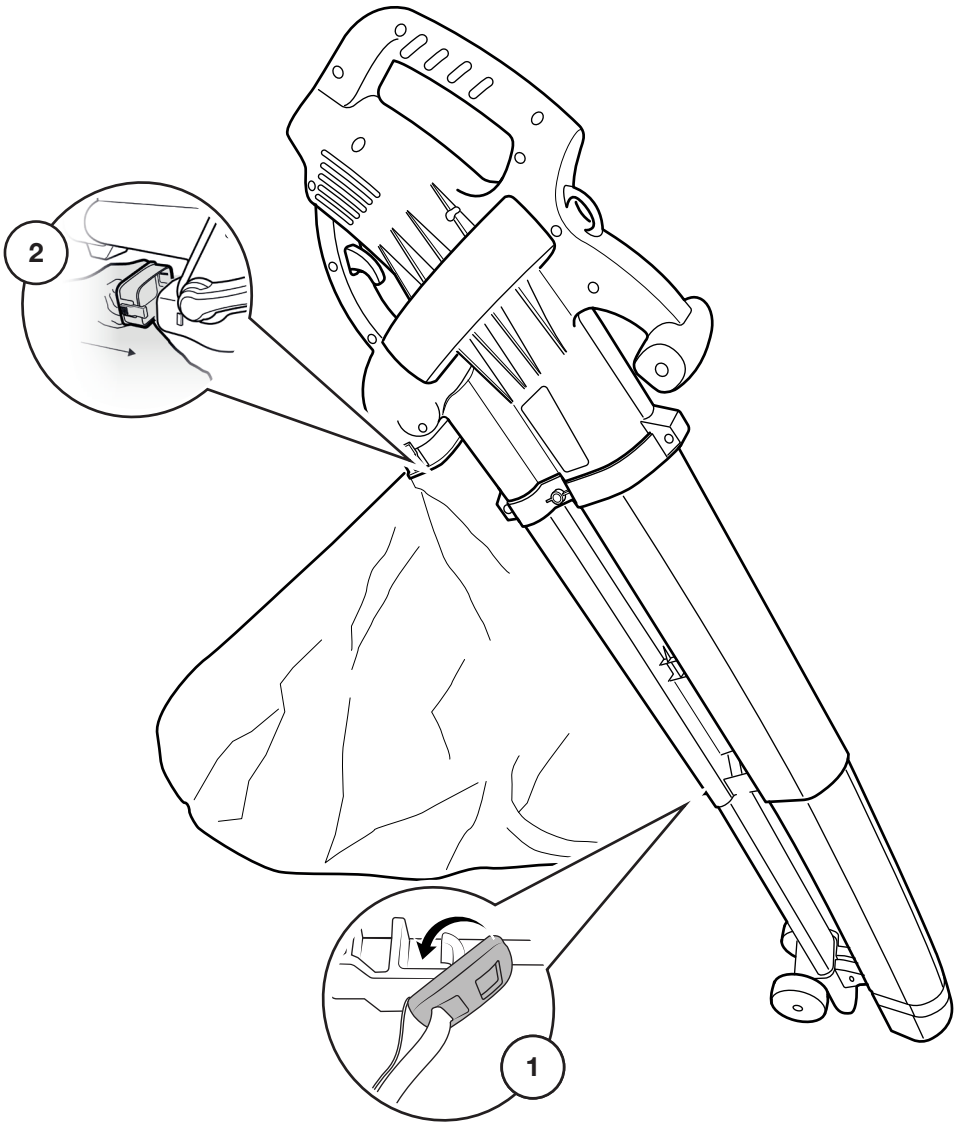
1. Large Screws x2
2. Small Screw x1 (Pre-assembled into #7)
3. Lower Chute
4. Middle Chute
5. Motor Section
6. Power Trigger
7. Mode Selector
8. Speed Adjustment
9. Collection Bag
10. Shoulder Strap

ASSEMBLY

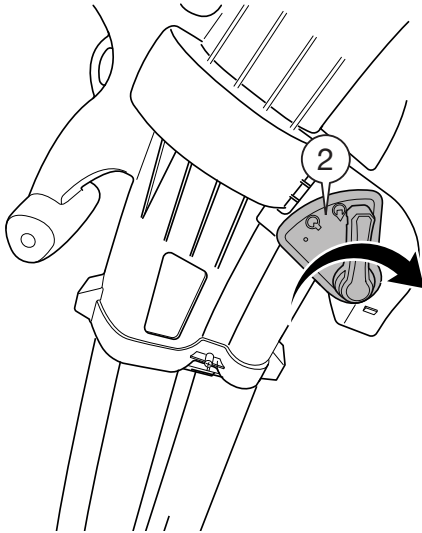


Remove pre-assembled screw (2) from part (7).
Slide part (7) onto the end and secure the screw into place.

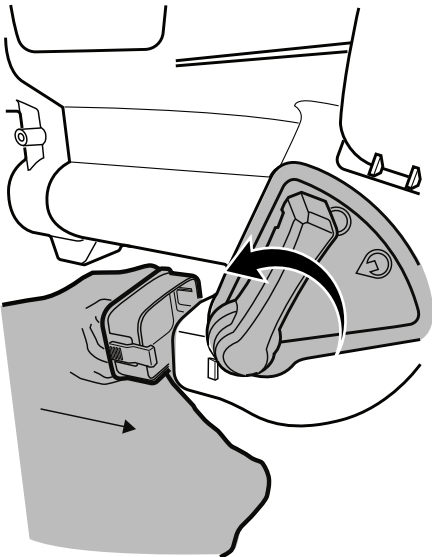




WORKING POSITION



Moving the Mode Selection Dial (8) to the right position will select Blow Mode.



Moving the Mode Selection Dial (8) to the left position will select Vacuum Mode.

This Function requires the Collection Bag (9) to be attached.

When using the Vacuum Mode ensure the bottom of the Chute is as close to the ground as possible, this will help to prevent loss of suction and help with efficiency.

NOTE: The opening of the Chute may become clogged, with the Leaf Blower switched on gently shake to dislodge and unclog.

WARNING: Do not insert your hands or any object's into the Chute to clear blockages whilst the Leaf Blower is in operation or still connected to the mains.

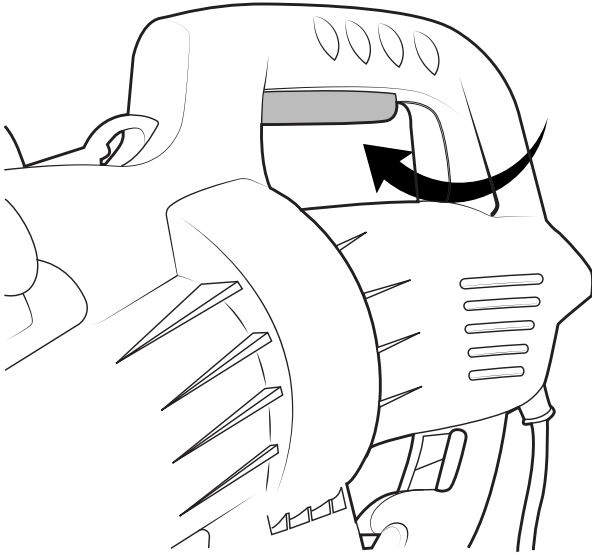
NOTE: For optimal performance use on dry leaves.

When used on wet leaves the outlet into the collection bag may become blocked due to the mulching of the wet leaves.

To unblock switch off and unplugging the leaf blower.

Remove the collection bag clear the blocked outlet.

Do not use to clean up sticks/twigs/stones etc.





EN

DISPOSAL INFORMATION Please recycle where facilities exist. Check with your local authority for recycling advice.

CUSTOMER SERVICE If you are having difficulty using this product and require support, please contact support@domu.co.uk

WARRANTY To register your product and find out if you qualify for a free extended warranty please go to www.vonhaus.com/warranty. Please retain a proof of purchase receipt or statement as proof of the purchase date. The warranty only applies if the product is used solely in the manner indicated in the warnings page of this manual, and all other instructions have been followed accurately. Any abuse of the product or the manner in which it is used will invalidate the warranty. Returned goods will not be accepted unless re-packaged in its original packaging and accompanied by a relevant and completed returns form. This does not affect your statutory rights. No rights are given under this warranty to a person acquiring the appliance second-hand or for commercial or communal use.

COPYRIGHT All material in this instruction manual are copyrighted by DOMU Brands. Any unauthorised use may violate worldwide copyright, trademark, and other laws.

THANK YOU

Thank you for purchasing your product/appliance. Should you require further assistance with your purchase, you can contact us at support@domu.co.uk

VonHaus is a registered trademark of DOMU Brands Ltd. Made in China for DOMU Brands. M24 2RW.