

2515206



Please read all instructions carefully before use and retain for future reference.



CAUTION Do not immerse in water.



Protect your ears.



Wear a dust mask.



Protect your eyes.



Protect your hands.

Please read all instructions carefully before use and retain for future reference.

INTENDED USE Only operate the power tool/machine for its intended purpose and within the parameters specified in this manual.

This power tool/machine is for domestic use only. This power tool/machine is not intended for use by persons with reduced physical, sensory or mental capabilities, or lack of experience and knowledge, unless supervised or given appropriate instruction concerning the product's use by a person responsible for their safety.

GENERAL PRECAUTION Do not allow to be used as a toy. Children should be supervised to ensure they do not play with the power tool/machine.

If the power tool/machine is not functioning properly, has been dropped, damaged, left outdoors, or immersed in liquid, do not use, contact DOMU Brands Customer Services.

Do not use the power tool/machine if any parts appear to be faulty, missing or damaged.

Ensure all parts are securely attached before use.

RISK OF PERSONAL INJURY Avoid body contact with earthed or grounded surfaces such as pipes, radiators, ranges and refrigerators. There is an increased risk of electric shock if your body is earthed or grounded.

Prevent unintentional starting. Ensure the switch is in the off position before connecting to the power source and/or battery pack, picking up or carrying the tool. Carrying power tools with your finger on the switch, or energising power tools that are switched on, invites accidents.

Do not operate power tools in explosive atmospheres such as in the presence of flammable liquids, gases or dust. Power tools create sparks which may ignite the dust or fumes.

Always wear eye protection. Any power tool can throw foreign objects into your eyes and cause permanent eye damage. Always wear safety goggles (not glasses) that comply with ANSI safety standard Z87.1. Every day glasses have only impact resistant lenses.

Do not expose power tools to rain or wet conditions. Water entering the power tools will increase the risk of electric shock.

Stay alert, watch what you are doing and use common sense when operating a power tool/machine. Do not use a power tool/machine while you are tired or under the influence of drugs, alcohol or medication. A moment of inattention while operating power tool/machine may result in serious personal injury.

Use personal protective equipment. Always wear eye protection. Protective equipment such as dust mask, non-skid safety shoes, hard hat, or hearing protection used for appropriate conditions will reduce personal injuries.

Prevent unintentional starting. Ensure the switch is in the off-position before connecting to power source and/or battery pack, picking up or carrying the tool.

Carrying power tool/machine with your finger on the switch or energizing power tool/machine that have the switch on invites accidents.

Remove any adjusting key or spanner before turning the power tool/machine on. A spanner or a key left attached to a rotating part of the power tool/machine may result in

personal injury.

Do not overreach. Keep proper footing and balance at all times. This enables better control of the power tool/machine in unexpected situations.

Dress appropriately. Do not wear loose clothing or jewellery.

Keep your hair, clothing and gloves away from moving parts. Loose clothes, jewellery or long hair can be caught in moving parts.

If devices are provided for the connection of dust extraction and collection facilities, ensure these are connected and properly used. Use of dust collection can reduce dust-related hazards.

WORK AREA SAFETY Keep work area clean and well lit. Cluttered or dark areas invite accidents.

Do not operate power tool/machine in explosive atmospheres, such as in the presence of flammable liquids, gases or dust.

Power tool/machine create sparks which may ignite the dust or fumes.

Keep children and bystanders away while operating a power tool/machine. Distractions can cause you to lose control.

GENERAL POWER TOOL USE AND CARE Do not force the power tool/machine. Use the correct power tool/machine for your application. The correct power tool/machine will do the job better and safer at the rate for which it was designed.

Do not use the power tool/machine if the switch does not turn it on and off. Any power tool/machine that cannot be controlled with the switch is dangerous and must be repaired.

Disconnect the plug from the power source and/or the battery pack from the power tool/machine before making any adjustments, changing accessories, or storing power tool/machine tools. Such preventive safety measures reduce the risk of starting the power tool/machine accidentally.

Store idle power tool/machine out of the reach of children and do not allow persons unfamiliar with the power tool/machine or these instructions to operate the power tool/machine.

Power tool/machines are dangerous in the hands of untrained users.

Maintain power tool/machines. Check for misalignment or binding of moving parts, breakage of parts and any other condition that may affect the power tool/machines operation. If damaged, have the power tool/machines repaired before use. Many accidents are caused by poorly maintained power tool/machines.

Keep cutting tools sharp and clean.

Properly maintained cutting tools with sharp cutting edges are less likely to bind and are easier to control.

Use the power tool/machine accessories and tool bits in accordance with these instructions, take into account the working conditions and the work to be performed.

Use of the power tool/machine for operations different from those intended could result in a hazardous situation.

CLEANING & MAINTENANCE Never soak or immerse electrical components and or a component that has a plug attached.

Disconnect the plug from the power source before making any adjustments, changing accessories, or storing. Such preventive safety measures reduce the risk of starting the power tool accidentally.

Ensure the motor has fully stopped before cleaning, clearing a blockage, checking, or carrying out any maintenance on the tool.

Maintain your power tool. Check for misalignment or binding of moving parts, breakage of parts and any other condition that may affect the power tool's operation. If damaged, have the power tool repaired by a qualified repair person before use. Many accidents are caused by poorly maintained power tools.

Keep cutting tools sharp and clean. Properly maintained cutting tools with sharp cutting edges are less likely to bind and are easier to control.

Regularly check external nuts and fixings to ensure vibration caused by normal use has not begun to loosen them. Store idle power tools out of reach of children and do not allow persons unfamiliar with the power tool or these instructions to operate the Breaker.

Locate the power tool out of reach of children, in a dry, locked unit.

Make sure that the cord is located so that it will not be stepped on, tripped over, or otherwise subjected to damage or stress.

Remove the plug from the mains socket / battery (where applicable) before carrying out any adjustment or maintenance.

Always store the power tool/machine in a dry place.

If the power cord is damaged, it must be replaced by a qualified service technician.

Keep the ventilation slots and motor housing as free of dirt and dust as possible (where applicable).

Clean the power tool/machine by rubbing it with a clean cloth and blow it clean using low-pressure compressed air is recommended.

Ensure you have all the pieces listed. If you are missing any components, contact our customer services department at

support@domu.co.uk DO NOT proceed with assembly if any components are missing.

LAWN TRIMMERS & LAWN EDGE TRIMMERS

Check for misalignment or binding of moving parts, breakage of parts and any other condition that may affect the power tool's operation.

Keep cutting tools sharp and clean. Properly maintained cutting tools with sharp cutting edges are less likely to bind and are easier to control.

Hold power tool by insulated gripping surfaces, when performing an operation where the cutting accessory may contact hidden wiring or its own cord. Cutting accessory contacting a "live" wire may make exposed metal parts of the power tool "live" and could give the operator an electric shock.

Keep hands away from cutting area. Never reach underneath the workpiece for any reason. Do not insert fingers or thumb into the vicinity of the blade and blade release switch.

TECHNICAL SPECIFICATION

Rated Voltage 220V - 240V~

Rated Power 710W

Rated Frequency 50Hz

Cutting Length 61cm

DECLARATION OF CONFORMITY

We

DOMU Brands Ltd
Unit 30, Stakehill Industrial Estate, Middleton, Manchester M24 2RW. EU Representative - DOMU Brands
B.V Hofplein 20, 3032 AC, Rotterdam.

Declare under our sole responsibility the product:

SKU
2515206
Description

710W Hedge Trimmer

Complies with the essential requirements of the following directives:

2006/42/EC
2000/14/EC
2014/30/EU
2011/65/EU

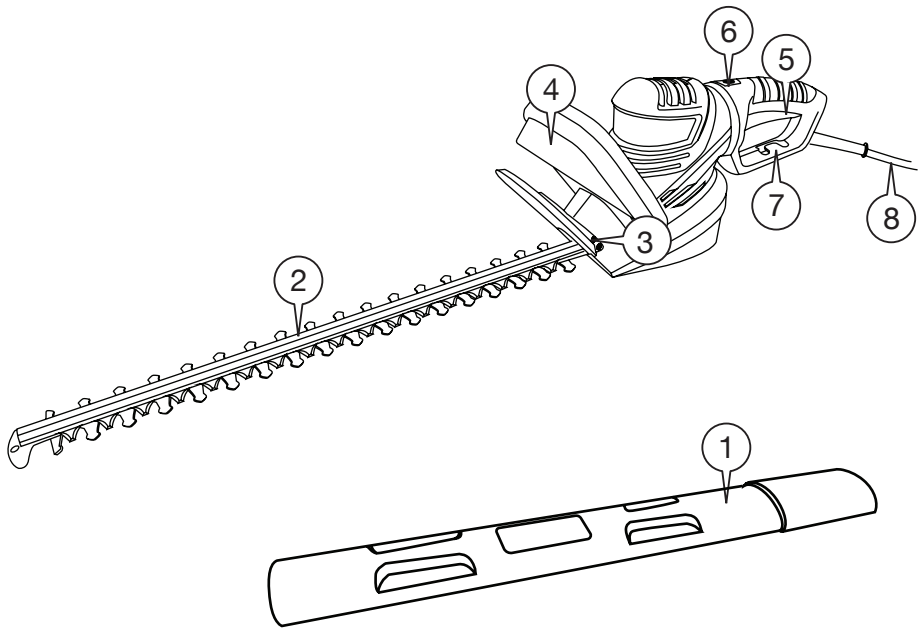
And the Standards

**EN 60745-1:2009+A11, EN 60745-2-15:2009+A11, EN 50636-2-94:2014, EN55014-1:2021, EN55014-2:2021,
EN61000-3-2:2019+A1, EN61000-3-3:2013+A1**

Authorised Signatory on behalf of DOMU Brands Ltd.



SPECIFICATION



- 1. Blade Safety Cover
- 2. Dual Action Cutting Blades
- 3. Safety Protection Guard
- 4. Front Handle with ON/OFF Trigger
- 5. Rear Handle with ON/OFF Trigger
- 6. Handle Adjustment Button
- 7. Cable Holder
- 8. Power Cable

CONNECTION

This Hedge Trimmer may only be connected to a single phase AC current.

Ensure that the mains voltage is the same as the operating voltage indicated on the rating plate.

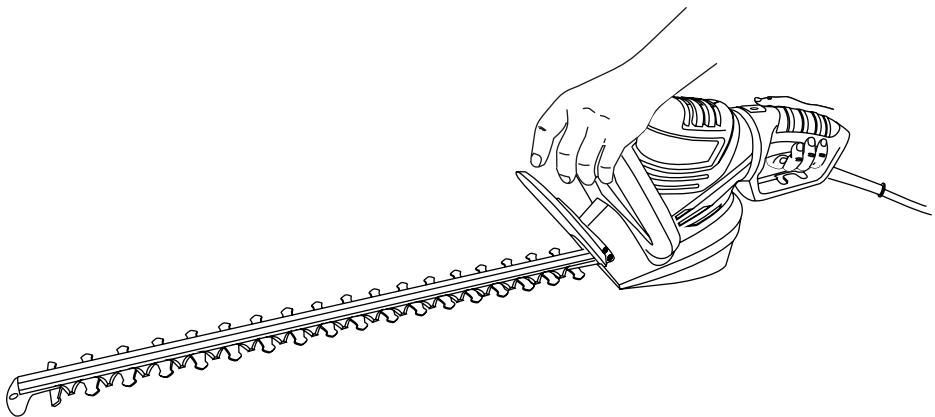
Form a loop in the power cable and push it through the opening in the rear of the Handle (5) and hook it over the Cable Holder (7).

OPERATION

Whilst holding the Rear Handle (5), squeeze the Front Handle (4) to power on the Hedge Trimmer.

IMPORTANT: Both Handles must be activated simultaneously for the Hedge Trimmer to power on.

If using an extension cable, ensure that the cord is safely hooked around the Cable Holder (7) in order to prevent damage to the cables or injury.

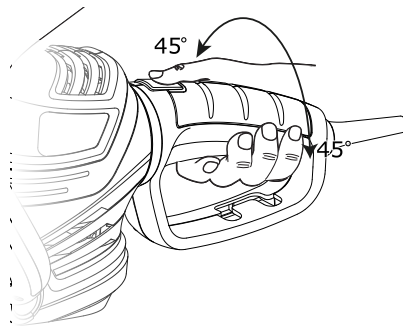


HANDLE ROTATION

Press the Handle Adjustment Button (6), then rotate the Rear Handle around the main part of the tool.

NOTE: The Rear Handle can be adjusted to different positions to suit left-handed or right-handed users.

IMPORTANT: The Lock Button must be clicked into place in order for the Hedge Trimmer to power on.



WORKING POSITION

Maintain proper footing and balance and be careful not to overreach.

Always wear safety goggles, non-slip footwear and rubber gloves when using the Hedge Trimmer.

Hold the tool firmly in both hands and turn the tool on by squeezing both Triggers (4, 5).

Always hold the Hedge Trimmer with one hand on the Front Handle (4) and one hand on the Rear Handle (5).

CAUTION: Never hold the tool by the Safety Protection Guard (3).

CLEANING & MAINTENANCE

Clean the exterior of the Hedge Trimmer thoroughly using a soft brush and cloth.

Remove all debris, especially from the ventilation slots on the motor housing.

CAUTION: Do not use water or solvents. Do not use abrasive materials to clean the Hedge Trimmer.

WARNING! Do not immerse any part of the tool in water or any other liquid.

Before storing, clean and lubricate the Dual Action Cutting Blades (2) and replace the protective Blade Safety Cover (1).

IMPORTANT: Always fit the Blade Safety Cover when transporting or storing the Hedge Trimmer.

Store the Hedge Trimmer in a secure, dry place, out of reach of children and animals.

Do not place other objects on top of the Hedge Trimmer when storing.

CAUTION: Storing the tool outside in a damp environment such as a garden shed may cause certain components such as the Blades to corrode.

Before use, visually check the condition of the cutting edges of the Dual Action Cutting Blades (2) and the tightness of the bolts.

Always clean the Blades after operation and coat with lubricating oil or spray. This will prevent them from becoming seized or corroded during storage.

During cutting periods of 10 mins or longer, it is recommended that you lubricate the Blades in order to improve cutting performance.

CAUTION: A lack of lubrication can severely effect the Hedge Trimmer Blades and may cause excess strain on the motor.

IMPORTANT: When not in use, ensure the Dual Action Cutting Blades have been lubricated and are covered with the Blade Safety Cover (1) provided. Failure to do so may cause the Blades to corrode and will severely reduce cutting performance.

TROUBLESHOOTING

Problem	Solution
Tool does not power on.	Check that the plug is connected correctly.
Blades do not move.	<p>The Blades may be blocked. Power off and remove the blockage.</p> <p>The Blades may have siezed. Contact DOMU Brands Customer Services.</p>
Poor cutting performance.	The Blades may be damaged. Contact DOMU Brands Customer Services.
Blades become hot.	The Blades have not been lubricated. Power off the tool and lubricate the Blades as necessary.
Blades are juddering or vibrating abnormally.	There is a blockaage. Power off the tool and safely remove the blockage.



EN

DISPOSAL INFORMATION Please recycle where facilities exist. Check with your local authority for recycling advice.

CUSTOMER SERVICE If you are having difficulty using this product and require support, please contact **support@domu.co.uk**

WARRANTY To register your product and find out if you qualify for a free extended warranty please go to **www.vonhaus.com/warranty**. Please retain a proof of purchase receipt or statement as proof of the purchase date. The warranty only applies if the product is used solely in the manner indicated in the warnings page of this manual, and all other instructions have been followed accurately. Any abuse of the product or the manner in which it is used will invalidate the warranty. Returned goods will not be accepted unless re-packaged in its original packaging and accompanied by a relevant and completed returns form. This does not affect your statutory rights. No rights are given under this warranty to a person acquiring the appliance second-hand or for commercial or communal use.

COPYRIGHT All material in this instruction manual are copyrighted by DOMU Brands. Any unauthorised use may violate worldwide copyright, trademark, and other laws.

THANK YOU

Thank you for purchasing your product/appliance. Should you require further assistance with your purchase, you can contact us at

support@domu.co.uk

VonHaus is a registered trademark of DOMU Brands Ltd.

Made in China for DOMU Brands. Unit 30, Stakehill Industrial Estate, Middleton, Manchester M24 2RW. EU Representative - DOMU Brands B.V Hofplein 20, 3032 AC, Rotterdam.