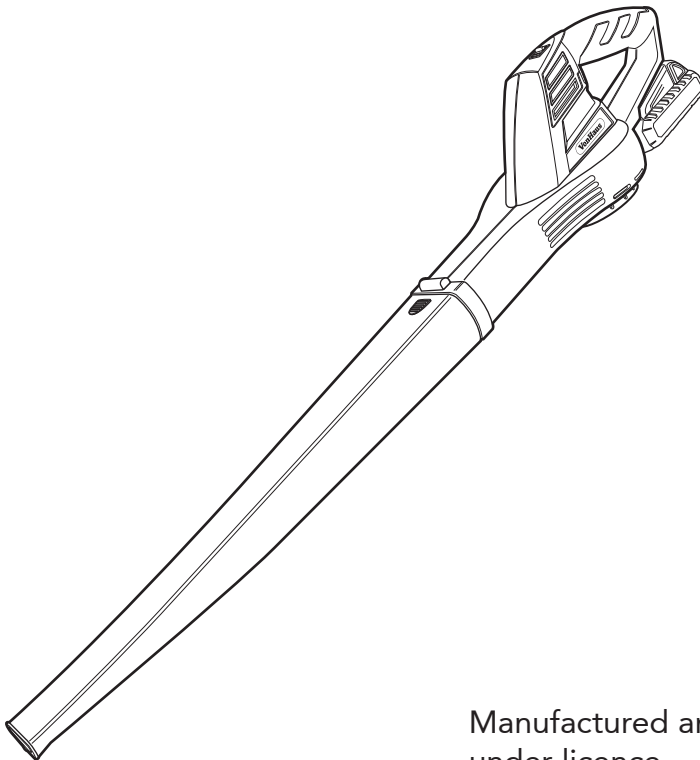


20V MAX LEAF BLOWER

2515068 - Instruction Manual



Manufactured and sold
under licence

CONTENTS

Safety Instructions	1
Safety Instructions	2
Safety Instructions	3
Safety Symbols	4
Technical Specification	5

Charging the Battery, Important Charging Notes

6

Installing & Removing the Battery, Assembly

7

Operation, Cleaning & Maintenance

8

Troubleshooting

9

Warranty, Declaration

10

WARNING

PLEASE READ THESE INSTRUCTIONS CAREFULLY AND KEEP FOR FUTURE REFERENCE

INTENDED USE.

Only operate the Leaf Blower for its intended purpose and within the parameters specified in this manual.

This garden tool is for domestic use only. It is not for commercial use.

This garden tool is not intended for use in wet or damp conditions.

The garden tool is not intended for use by persons with reduced physical, sensory or mental capabilities, or lack of experience or knowledge, unless supervised or given appropriate instruction concerning the product's use by a person responsible for their safety.

This garden tool is not a toy and is not for use by children. Keep the tool, any attachment and its power cord out of reach.

IMPORTANT SAFETY INFORMATION.

WARNING! When using any electrically-powered appliance, these basic safety precautions should always be followed to reduce risk of fire, electric shock, or injury to persons or property.

Read all of this manual carefully before operating the appliance.

Before operating the Leaf Blower, make sure that you know how to switch off the appliance in an emergency.

Retain this manual for future reference.

WARNING! Secure long hair so that it is above shoulder length. Keep loose clothing, ties, tassels and hanging straps away from openings and moving parts.

Always be sure that the appliance is in a safe operating condition and that all parts are secure before use.

Do not operate the product if any parts appear defective or worn.

Do not attempt to pick up burning materials such as lit cigarette ends.

Do not operate the Leaf Blower in a gaseous or explosive atmosphere as motors in the appliances can spark and may ignite fumes.

Do not place the inlet or outlet of the Blower near eyes or ears when operating.

Never blow debris in the direction of bystanders.

Do not use in rainy conditions or leave outdoors while it is raining.

Use your product only in daylight.

Do not cross gravel paths or roads whilst the appliance is switched on during use. Walk, never run.

Do not place the appliance down on gravel while it is switched on.

Always be sure of your footing, particularly on slopes. Do not overreach and keep your balance at all times.

Do not pick up matter that may be contaminated with flammable or combustible liquids such as gasoline, or use in areas where such matter might be present.

Do not place any objects into the openings. Never use if the openings are blocked. Keep free of hair, lint, dust and anything that may reduce the airflow.

WARNING! Always use the appliance in the manner outlined in this manual. The Leaf Blower is designed to be used in an upright mode. Any other use may result in injury. Never operate the Leaf Blower whilst lying on its side or upside down.

TRAINING.

Read the instructions carefully.

Be familiar with the controls and the proper use of the appliance.

Do not allow children or any person unfamiliar with these instructions to operate the appliance. Local regulations may restrict the age of the operator.

Never use the appliance while people, especially children, or pets are nearby.

Remember that the operator will be held responsible for accidents or hazards occurring to other people or their property.

WARNING

PLEASE READ THESE INSTRUCTIONS CAREFULLY AND KEEP FOR FUTURE REFERENCE

PREPARATION.

Do not operate the Leaf Blower barefoot or in open sandals.

To protect your feet and legs, always wear stout shoes or boots and long trousers. Freshly cut grass is damp and slippery wearing suitable footwear will enhance your safety.

Use appropriate protective equipment. Wear safety spectacles or goggles whilst operating this appliance.

Use ear protection if the sound level seems uncomfortable when using the appliance.

BATTERY/CHARGER USE AND CARE.

Recharge only with the charger specified by the manufacturer. A charger that is suitable for one type of battery pack may create a risk of fire when used with another battery pack.

Use power tools only with specifically designated battery packs. Use of any other battery packs may create a risk of injury and fire.

An extension cord should not be used unless absolutely necessary. Use of an improper extension cord could result in the risk of fire or electric shock.

The charger is not intended to be used for any purpose other than charging rechargeable batteries. Any other use may result in risk of fire or electric shock.

First read the safety instructions and then follow the charging notes and procedures. The charger is only designed to operate on standard household electrical power.

Do not attempt to use it on any other voltage.

Never attempt to connect 2 chargers together.

Do not place any object on top of the charger or place the charger on a soft surface that may result in excessive internal heat.

Do not attempt to disassemble the charger. Take it to an electrician or power tool repairer when service or repair is required. Incorrect reassembly may result in a risk of electric shock or fire.

Do not expose the battery to direct sunlight for long periods of time.

Protect the battery and charger against water and moisture.

Protect the battery from heat and fire.

Place the charger in a position away from any heat source.

Remove the battery when the appliance is not in use or stored for periods of time.

When the battery pack is not in use, keep it away from other metal objects such as paper clips, coins, keys, nails, screws or other small metal objects that can make a connection from one terminal to another. Shorting the battery terminals together may result in burns or a fire.

To facilitate cooling of the battery pack after use, avoid placing the charger or battery pack in a warm environment, such as a metal shed, or an uninsulated trailer. The battery pack is not fully charged out of the box.

To reduce the risk of electric shock, unplug the charger from the outlet before attempting any cleaning. Removing the battery pack will not reduce this risk.

To reduce risk of damage to the electric plug and cord, pull by the plug rather than the cord when disconnecting the charger.

WARNING

PLEASE READ THESE INSTRUCTIONS CAREFULLY AND KEEP FOR FUTURE REFERENCE

Never attempt to open the battery pack for any reason or if the plastic housing of the battery pack breaks or cracks, immediately discontinue use and do not recharge.

Under abusive conditions, liquid may be ejected from the battery; avoid contact. If contact accidentally occurs, flush with water. If liquid comes into contact with eyes, additionally seek medical help. Liquid ejected from the battery may cause irritation or burns.

Have your power tool serviced by a qualified repair person using identical replacement parts only. This will ensure that the safety of the power tool is maintained.

Do not dispose of the battery in a fire. Do not incinerate the battery pack even if it is seriously damaged or is completely worn out.

Do not dispose of the battery in household waste. Deliver the batteries to a collection centre for old batteries where they will be recycled in an environmentally friendly way.

STORAGE AND MAINTENANCE.

Locate the power tool out of reach of children, in a dry, locked unit.

Do not store or use the tool and battery pack in locations where the temperature may exceed 40°C (such as inside sheds or metal buildings in summer).

Ensure the handles remain clean and free from oil and moisture so as to maintain proper grip during operation.

Ensure the motor has fully stopped and the battery removed before cleaning, clearing a blockage, checking, or carrying out any maintenance on the machine.

Regularly check external nuts and fixings to ensure vibration caused by normal use has not begun to loosen them.

Make sure the cord is located so that it will not be stepped on, tripped over, or otherwise subjected to damage or stress.

SAFETY SYMBOLS

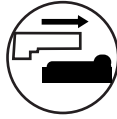
The following safety symbols may appear on this product. Please ensure you understand their meanings before operating this tool in order to prevent personal injury and avoid damage to the tool.



USE PRECAUTION
For your safety



PROTECTIVE GLOVES
Must be worn when operating



REMOVE BATTERY
From the appliance before cleaning



INSTRUCTION MANUAL
Read and understand



SUITABLE FOOTWEAR
Must be worn



EAR & EYE PROTECTION
Must be worn



UNSUITABLE WEATHER
Do not use in wet conditions



DUST MASK
Must be worn



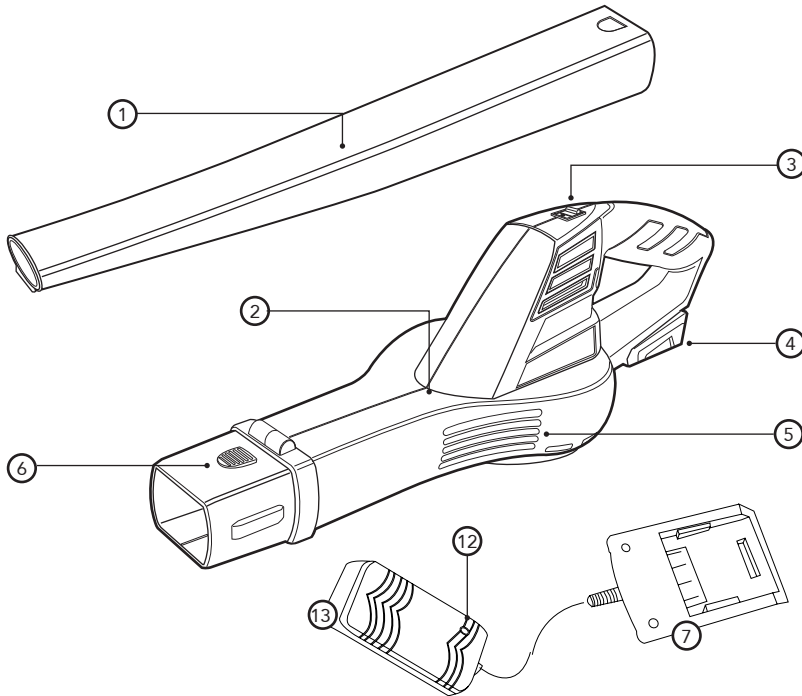
SAFE DISTANCE
Mind bystanders



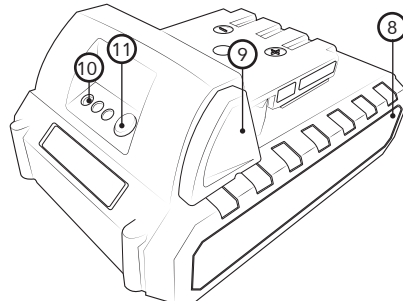
RISK OF INJURY
Keep hands at a safe distance

TECHNICAL SPECIFICATION

BATTERY MAX	CHARGE TIME	BATTERY	ROTATION SPEED
V	Hours	Li-Ion	RPM
20	1	1500mAh	12000



1. Detachable Chute.
2. Motor Unit.
3. Power Switch.
4. Battery Compartment.
5. Air Inlets.
6. Chute Release Button.
7. Battery Charger.
8. 20V Max Battery.
9. Battery Release.
10. Battery Level Indicator Lights.
11. Battery Indicator Light Button.
12. Charger Indicator Light.
13. Charger adapter.



CHARGING THE LITHIUM-ION BATTERY PACK

Plug the Charger Adaptor Plug (12) into a mains power outlet. The green Charge Indicator Light (11) on the Charger Adaptor Plug will illuminate to indicate that power is being supplied.

With the 20V Max Battery (8) sitting flat on a bench/table, align the Battery with the Battery Charger Adaptor (10) and slide the Battery into the recess of the battery terminals to create a firm connection.

NOTE: The Battery only fits one way. If it will not fit, this means that it is upside down.

The Battery will take up to 1 hour to charge. Charging will begin automatically.

LEVEL OF CHARGE

Pressing the Charge Indicator Button (A) will indicate the degree of charge by means of the Charge Light (B) and Charge Indicator Lights (C).

If the Charge Light turns red and the Charge Indicator Lights fail to come on, the battery requires charging.

If the Charge Light does not light up, and the Charge Indicator Lights turn green, the battery is charged.

The Charge Indicator Lights indicate the level of charge as follows:

1 light flashing = The Battery is low/requires charging.

2 solid green lights = The Battery is partially charged.

3 solid green lights = The Battery is fully charged.

You can also press the Charge Indicator Button whilst the device is charging:

If the Charge Indicator Lights turn green and flicker, the battery is charging.

If the Charge Indicator Lights turn green and do not flicker, the battery is fully charged.

NOTE: The Battery will not reach its full charge the first time it is charged.

IF THE LIGHT ON THE CHARGER ADAPTOR FAILS TO COME ON:

Check that the Charger Adaptor Plug is securely plugged into the mains power outlet and switched on.

Check that the Battery Charger Adaptor is securely connected into the socket of the Battery.

IF THE BATTERY DOES NOT CHARGE PROPERLY:

Check the power outlet by plugging in a lamp or other appliance.

If charging problems persist, have the complete tool checked by an electrician or qualified power tool repairer.

IMPORTANT CHARGING NOTES:

DISCHARGING

To protect the Battery against deep discharging when the Battery is flat, a protective circuit will switch off the Leaf blower. Do not continue to press the ON/OFF Switch (3) after an automatic shut-off as this will damage the Battery.

The Battery must be recharged before further use.

NOTE: Up to 30 minutes cooling time may be required (depending on ambient temperature and the operation being performed) before the Battery will start the charging cycle.

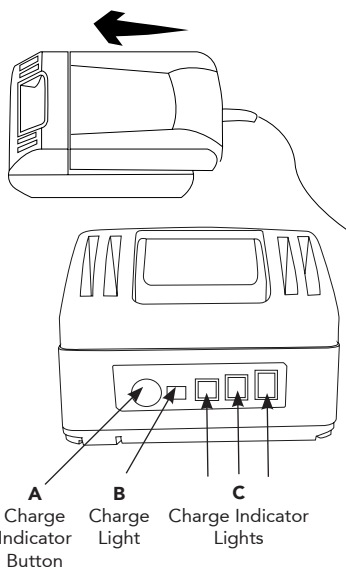
CAUTION: This unit's Battery pack has low voltage protection. This means that, when fully discharged, the unit will suddenly stop and will require charging. You will not experience the normal tapering off or slowing down of power as seen with other battery types.

OVERHEATING

The Battery Charger Adaptor and Battery may become warm to the touch while charging. This is normal and is not a fault with the product. Use the Battery Charger Adaptor at normal room temperature whenever possible.

CAUTION: To prevent overheating, do not cover the charging unit and do not charge the Battery in direct sunlight or near heat sources.

CAUTION: Always remove the Charger Adaptor Plug from the mains power outlet when not in use.



INSTALLING & REMOVING THE BATTERY

WARNING! Always switch off the tool before removing or inserting the Battery.

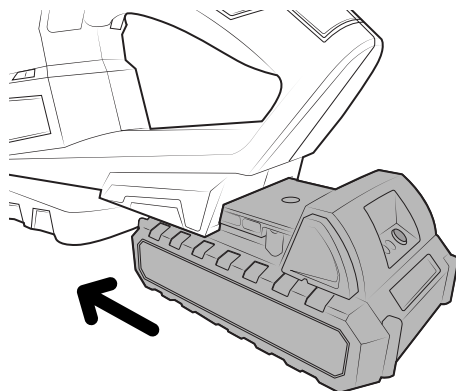
Align the notches in the base of the Leaf Blower Handle with those on the Battery and slide the Battery and Leaf Blower together until the Battery locks into place.

CAUTION: Do not use excessive force when inserting the Battery if resistance occurs. If the Battery does not slide in easily, it is not being inserted correctly and could cause damage to the Battery, terminals or the Leaf Blower.

WARNING: Do not operate the switches whilst inserting the Battery.

REMOVING THE BATTERY

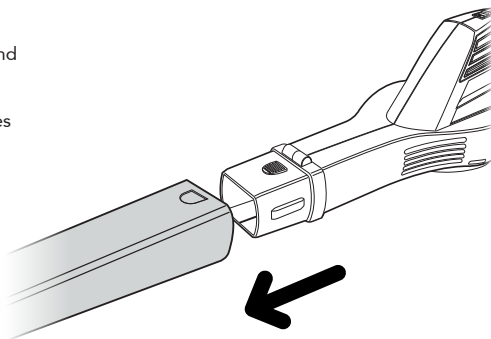
Press the Battery Release Button to release the Battery from the Leaf Blower and slide up and away from the body to remove.



ASSEMBLY

Simply slide the **MOTOR UNIT (2)** into the larger end of the **DETACHABLE CHUTE (1)**.

Ensure the **CHUTE RELEASE BUTTON (6)** protrudes through the small opening at the end of the **DETACHABLE CHUTE (1)**.



OPERATION

To start the Leaf Blower push the **POWER SWITCH (3)**.

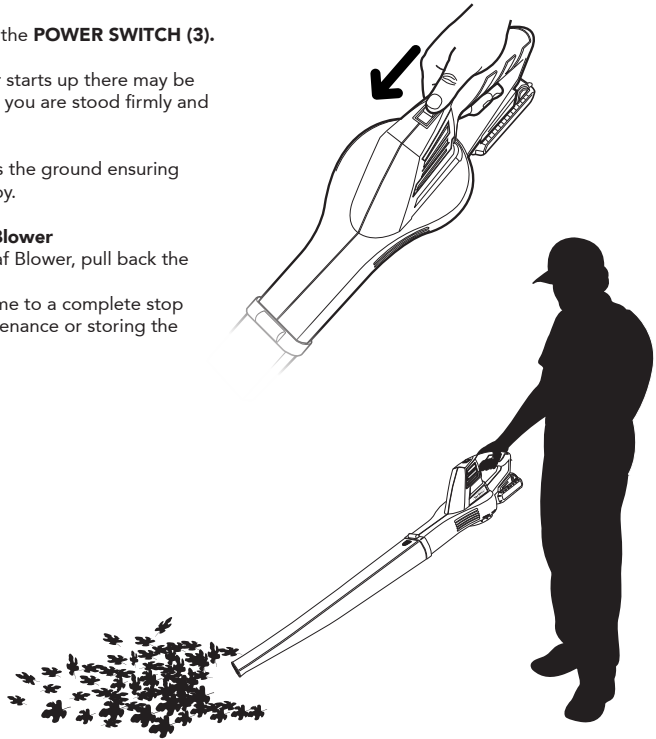
NOTE: When the Leaf Blower starts up there may be some kickback, always ensure you are stood firmly and have a firm grip.

Point the Leaf Blower towards the ground ensuring there are no bystanders nearby.

POWERING OFF THE Leaf Blower

To power off the 20V Max Leaf Blower, pull back the **POWER SWITCH (3)**.

Wait until the Leaf Blower come to a complete stop before carrying out any maintenance or storing the tool.



CLEANING & MAINTENANCE

Before storing, always remove the Battery from the tool.

Store the tool in a secure, dry place, out of reach of children and animals.

Do not place other objects on top of the Leaf Blower when storing.

Storing the tool outside in a damp environment such as a garden shed may cause certain components to corrode.

CAUTION: Do not use abrasive materials to clean the product.

WARNING! Do not immerse any part of the tool in water or any other liquid.

Clean the exterior of the machine thoroughly using a soft brush and cloth.

WARNING! Do not use water or solvents.

Remove any debris, especially from the **AIR INLET (5)** slots on the **MOTOR UNIT (2)** housing.

TROUBLESHOOTING

Problem	Solution
Tool will not start.	<p>Ensure the 20V MAX BATTERY (8) is correctly inserted into the BATTERY COMPARTMENT (4).</p> <p>Check the battery is fully charged before use.</p> <p>The Leaf Blower may have overheated due to continual usage. Remove the BATTERY (8) and allow the unit to cool for 60 minutes before next use.</p> <p>If the problem persists, contact DOMU Brands customer services for technical support.</p>
Air velocity decreases.	<p>Switch off the Leaf Blower and check the AIR INLETS (5) for any potential blockages. Remove using a soft bristled brush before continuing to use.</p> <p>Ensure the 20V MAX BATTERY (8) is fully charged.</p> <p>If the problem persists, contact DOMU Brands customer services for technical support.</p>

CUSTOMER SERVICE

If you are having difficulty using this product and require support, please contact support@domu.co.uk

DECLARATION OF CONFORMITY

We:
DOMU Brands Ltd
6th Floor The Tower
Deva City Office Park
Manchester
M3 7BF

Declare under our sole responsibility that the product:
SKU: 2515068
Description: VonHaus 20V Max Leaf Blower.

To which this declaration relates is in conformity with the following directives:

2014/30/EU, 2006/42/EC, 2000/14/EC, 2011/65/EU.

DISPOSAL INFORMATION

PRODUCT DISPOSAL INFORMATION

For electrical products sold within the European Community, at the end of the electrical product's useful life, it should not be disposed of with household waste. Please recycle where facilities exist.

Contact your local authority for details of collection schemes in your area.

IN ALL CIRCUMSTANCES:

Do not dispose of in domestic waste.
Do not incinerate.
Do not abandon in the environment.
Do not dispose of WEEE as unsorted municipal waste.



HEALTH AND SAFETY FOR BATTERIES

Do not put in fire or mutilate – cells may burst and release toxic material.
Do not short-circuit cells as this may cause fire or burns.
The battery must be removed from the appliance before being scrapped.
The battery is to be disposed of safely.

BATTERY DISPOSAL INFORMATION

Do not mutilate batteries as corrosive electrolytes and flammable materials will be released.
Do not incinerate – Danger of explosion and release of toxic fumes.
Do not dispose of batteries or cells in a charged condition.
Expired lithium-ion batteries must be recycled/disposed of in accordance with the appropriate regulation or legislation. They should be returned to your local warranty agent/stockist.



WARRANTY

To register your product and find out if you qualify for a free extended warranty please go to

[Vonhaus.com/warranty](https://www.vonhaus.com/warranty).

Please retain a proof of purchase receipt or statement as proof of the purchase date.

The warranty only applies if the product is used solely in the manner indicated in the Warnings page of this manual, and all other instructions have been followed accurately. Any abuse of the product or the manner in which it is used will invalidate the warranty.

Returned goods will not be accepted unless re-packaged in its original packaging and accompanied by a relevant and completed returns form. This does not affect your statutory rights.

No rights are given under this warranty to a person acquiring the appliance second-hand or for commercial or communal use.

COPYRIGHT

All material in this instruction manual are copyrighted by DOMU Brands.

Any unauthorised use may violate worldwide copyright, trademark, and other laws.

VonHaus.com

Thank you for purchasing the 20V Max Leaf Blower.

VonHaus® is a registered trademark of DOMU Brands Ltd
Made in China for DOMU Brands Ltd M24 2RW

vonhaus