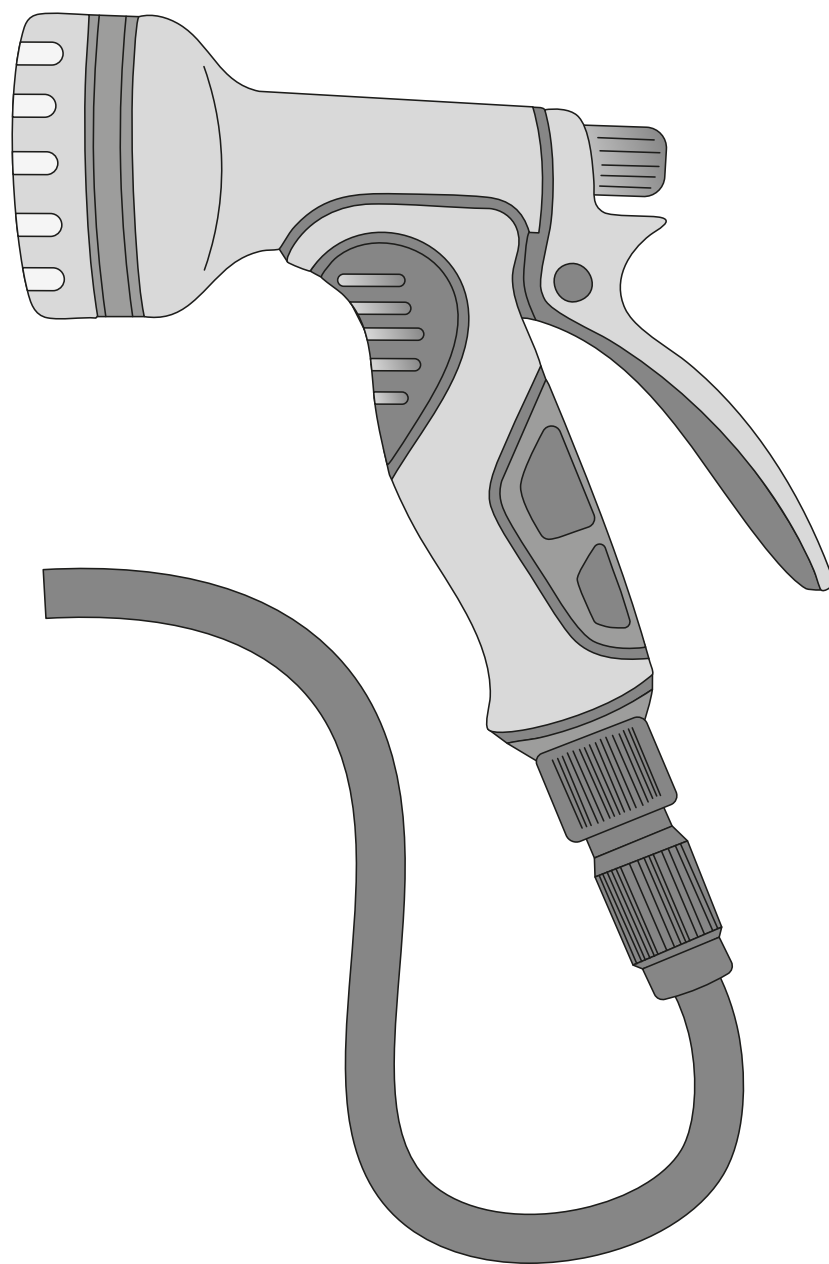


vonhaus

EXPANDABLE HOSE



Setup Instructions

Product No. 2500997 / 2500998

Need further help?
support@vonhaus.com

Besoin d'aide supplémentaire ?
support@vonhaus.com

Benötigen Sie weitere Hilfe?
support@vonhaus.com

Necesita más ayuda?
support@vonhaus.com

Hai bisogno di ulteriore assistenza?
support@vonhaus.com

See our full range at
www.vonhaus.com

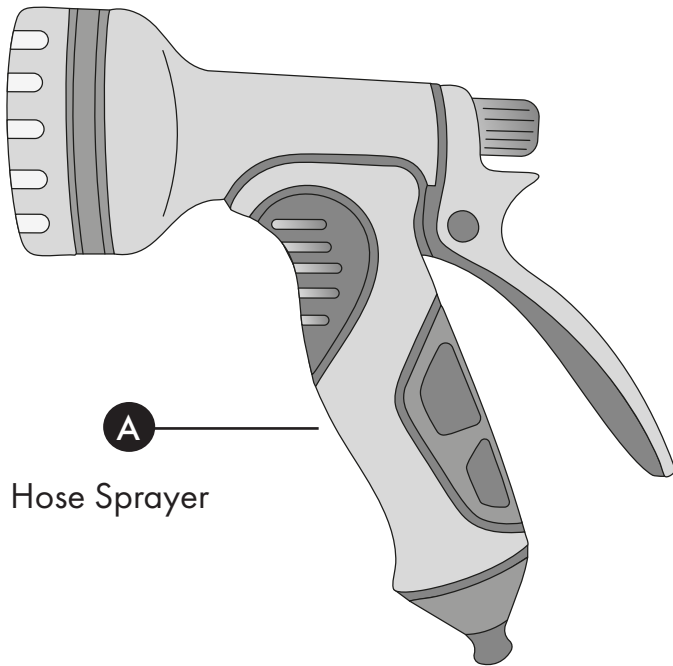
Découvrez notre gamme complète sur
www.vonhaus.com

**Entdecken Sie unser gesamtes
Sortiment auf**
www.vonhaus.com

Descubra toda nuestra gama en
www.vonhaus.com

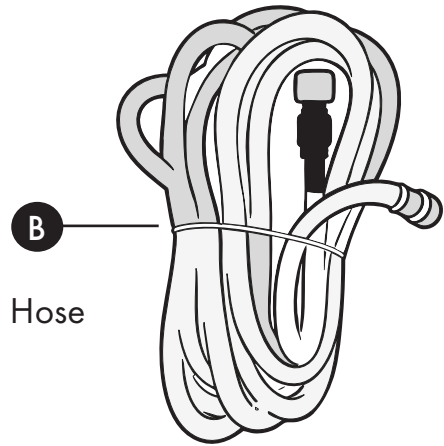
Scopri tutta la nostra gamma su
www.vonhaus.com

Components



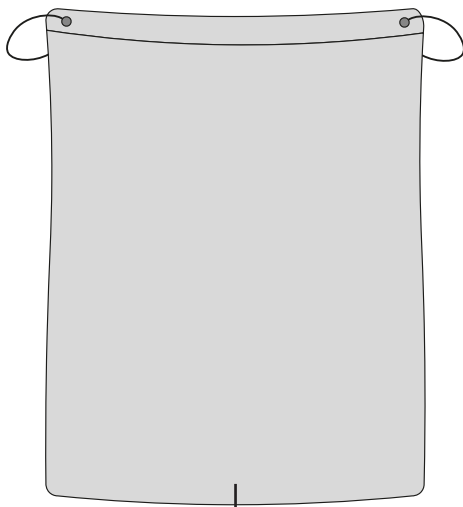
A

Hose Sprayer



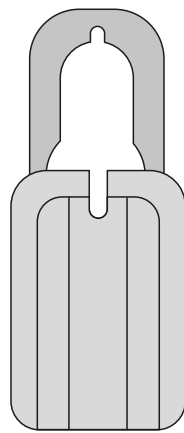
B

Hose



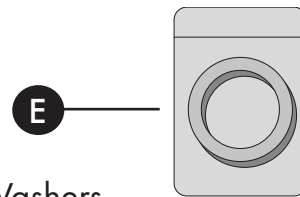
C

Storage Bag



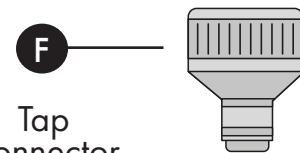
D

Wall Mountable Hook



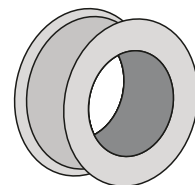
E

Washers



F

Tap Connector



G

Repair Kit

Information

Instructions for Use

1. Before use, ensure the rubber washer is firmly seated inside the connector end of the hose that attaches to the water outlet to prevent leaks.
2. Securely attach one end of the hose to the water outlet tap.
3. Connect the spray gun to the opposite end of the hose.
4. Turn on the water supply SLOWLY. Allow the hose to fully expand before increasing water flow.
5. Rotate the spray gun head to select your desired spray pattern.
6. Squeeze the trigger to activate water flow; release to stop.
7. Note: Always release water pressure and drain the hose after use for longer product life.

Maintenance

- Store the hose in a cool, dry place to prevent damage.
- Inspect the hose regularly for any signs of wear or damage.
- Clean the hose after each use to remove dirt and debris.
- Avoid dragging the hose over sharp objects to prevent punctures.
- Ensure the hose is fully drained before storing it to prevent mold growth.

Health & Safety

- Store the hose in a cool, dry place when not in use.
- Avoid sharp bends and kinks in the hose.
- Always inspect the hose for damage before use.
- Do not exceed the recommended pressure limit.
- Use appropriate fittings and connectors.
- Recommended pressure limit: 130PSI.
- Do not allow the hose to freeze. Optimum temperature for use is +5 degrees Celsius.

Troubleshooting

Why is the hose not expanding fully?

Ensure the water pressure is sufficient and the hose is not tangled.

Why is there low water pressure coming from the hose?

Check if the hose is kinked or blocked.

How do I fix a leak in the hose?

Use a hose repair kit to patch the leak.

How can I prevent the hose from tangling?

Store the hose properly and avoid sharp bends.

What should I do if the hose is not retracting?

Check for any blockages and ensure the hose is not damaged.

Legal

DISPOSAL INFORMATION

Please recycle where facilities exist. Check with your local authority for recycling advice.

CUSTOMER SERVICE

If you are having difficulty using this product and require support, please contact support@vonhaus.com

WARRANTY

To register your product and find out if you qualify for a free extended warranty please go to www.vonhaus.com/warranty.

Please retain a proof of purchase receipt or statement as proof of the purchase date.

The warranty only applies if the product is used solely in the manner indicated in the warnings page of this manual, and all other instructions have been followed accurately.

Any abuse of the product or the manner in which it is used will invalidate the warranty.

RETURNS

Returned goods will not be accepted unless re-packaged in its original packaging and accompanied by a relevant and completed returns form. This does not affect your statutory rights.

No rights are given under this warranty to a person acquiring the appliance second-hand or for commercial or communal use.

COPYRIGHT

All material in this instruction manual are copyrighted by DOMU Brands.

Any unauthorised use may violate worldwide copyright, trademark, and other laws.

THANK YOU

Thank you for purchasing your product/appliance.

Should you require assistance with your purchase, please contact us at support@domu.co.uk

VonHaus is a registered trademark of DOMU Brands Ltd.

Made in China for DOMU Brands.

Unit 30, Stakehill Industrial Estate,
Middleton, Manchester, M24 2RW

AUTHORISED REPRESENTATIVE

Authorised Representative Service
77 Camden Street Lower
Dublin, D02 XE80, Ireland



Product No. 2500997 / 2500998