

2500887.2



Please read all instructions carefully before use and retain for future reference.
Veuillez lire attentivement ces instructions avant utilisation et conservez-les pour pouvoir les consulter à l'avenir.

Bitte lesen Sie die Anleitung sorgfältig und bewahren Sie sie als Referenz auf.

Leed todas las instrucciones detenidamente antes de usar y retened para futuras consultas.

Si prega di leggere attentamente tutte le istruzioni prima dell'uso e conservarle per una futura consultazione.



ATTENTION This appliance has a thermal cut out switch. The thermal cut out will activate and shut down the appliance should the appliance overheat. Unplug from the mains and or battery and allow to cool for 30 minutes before re-use.

ATTENTION Cet appareil dispose d'un interrupteur d'arrêt thermique. L'arrêt thermique s'activera et éteindra l'appareil si l'appareil commençait à surchauffer.

Débranchez la prise, ou la batterie, et laissez refroidir pendant 30 minutes avant de réutiliser.

VORSICHT Dieses Gerät hat einen thermischen Ausschalter. Der thermische Ausschalter wird aktiviert und schaltet das Gerät aus, wenn das Gerät überhitzt. Ziehen Sie den Stecker aus der Steckdose und/oder entfernen Sie den Akku und lassen Sie das Gerät 30 Minuten abkühlen, bevor Sie es erneut benutzen.

ATENCIÓN Este aparato tiene un interruptor de corte térmico. El corte térmico se activará y apagará el dispositivo si el aparato se sobrecalienta.

Desenchufe de la red y / o la batería y déjelo enfriar durante 30 minutos antes de volver a usarlo.

ATTENZIONE Questo apparecchio è dotato di un interruttore di protezione termica che accende e spegne l'apparecchio in caso di surriscaldamento.

Scollegare dalla rete elettrica e o la batteria e lasciar raffreddare per 30 minuti prima di un nuovo utilizzo.



CAUTION Do not immerse in water.
ATTENTION Ne pas immerger dans l'eau.
VORSICHT Nicht in Wasser tauchen.
PRECAUCIÓN No sumergid en agua.
AVVERTENZA Non immergere nell'acqua.



CAUTION hot surfaces
ATTENTION Surfaces chaudes
VORSICHT heiße Oberflächen
PRECAUCIÓN superficies calientes
AVVERTENZA Superfici calde



Do not cover.
Ne pas couvrir.
Nicht abdecken.
No cubrir.
Non coprire.



Do not use outdoors.
Ne pas utiliser en extérieur.
Nicht im Freien verwenden.
No usar al aire libre.

THIS PRODUCT IS ONLY SUITABLE FOR WELL INSULATED SPACES OR OCCASIONAL USE.



SAFETY WARNINGS

PLEASE READ THE FOLLOWING INSTRUCTIONS CAREFULLY BEFORE USING THE APPLIANCE.


1. This appliance can be used by children aged from 8 years and above and persons with reduced physical, sensory or mental capabilities or lack of experience and knowledge if they have been given supervision or instruction concerning use of the appliance in a safe way and understand the hazards involved. Children shall not play with the appliance. Cleaning and user maintenance shall not be made by children without supervision.

2. Children of less than 3 years should be kept

away unless continuously supervised. Children aged from 3 years and less than 8 years shall only switch on/off the appliance provided that it has been placed or installed in its intended normal operating position and they have been given supervision or instruction concerning use of the appliance in a safe way and understand the hazards involved. Children aged from 3 years and less than 8 years shall not plug in, regulate and clean the appliance or perform user maintenance.

3. CAUTION - Some parts of this product can become very hot and cause burns. Particular attention has to be given where children and vulnerable people are present.

4. If the supply cord is damaged, it must be replaced by the manufacturer, its service agent or similarly qualified persons in order to avoid a hazard.

5. Warning: In order to avoid overheating, do not cover the heater. The meaning of figure  in marking is **“DO NOT COVER”**.

6. The heater must not be located immediately below a socket-outlet.

7. Do not use this heater in the immediate surroundings of a bath, a shower or a swimming pool.

8. This appliance only for household use.

9. WARNING: Do not use this heater in small rooms when they are occupied by persons not capable of

leaving the room on their own, unless constant supervision is provided.

10. This heater is filled with a precise quantity of special oil. Repairs requiring opening of the oil container are only to be made by the manufacturer or his service agent who should be contacted if there is an oil leakage. Regulations concerning the disposal of oil when scrapping the appliance have to be followed.

11. Do not use this heater if it has been dropped.

12. Do not use if there are visible signs of damage to the heater.

13. Use this heater on a horizontal and stable surface, or fix it to the wall, as applicable.

14. WARNING: To reduce the risk of fire, keep textiles, curtains, or any other flammable material a minimum distance of 1m from the air outlet.

15. Do not attempt to repair, disassemble or modify the appliance. There are no user-serviceable parts inside.

16. CAUTION – if using an extension lead please ensure you do not exceed the maximum rated running wattage/load of the extension lead.

17. Disconnect from mains when not in use or when moving or cleaning.

18. The heater is hot when in use. To avoid burns, do not let bare skin touch hot surface.

TECHNICAL SPECIFICATION

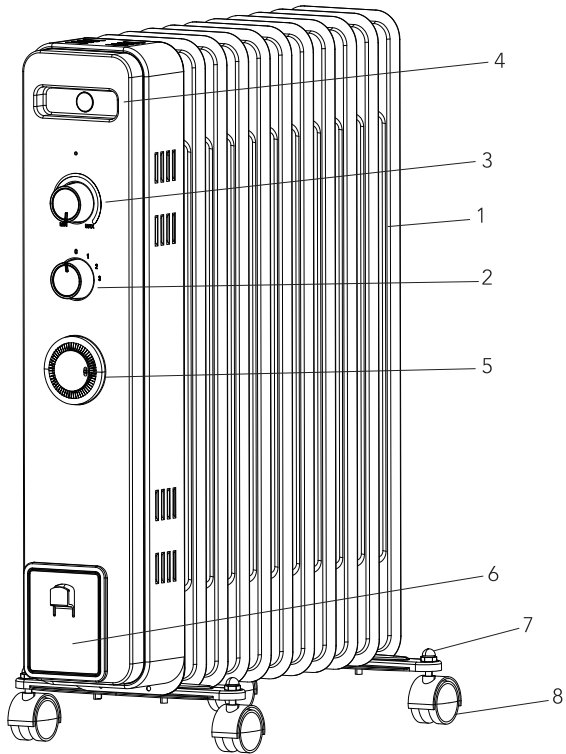
Rated Voltage 220V-240V

Rated Power 2500W

Rated Frequency 50Hz

ELECTRICAL INFORMATION FOR ELECTRIC LOCAL SPACE HEATER

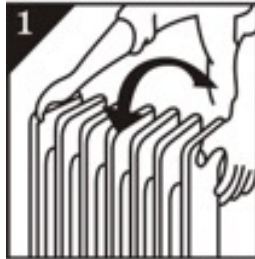
Model	2500887.2		
Item	Symbol	Value	Unit
Heat Output			
Nominal Heat Output	P_{nom}	0.9378	kW
Minimum Heat Output (indicative)	P_{min}	0.4553	kW
Maximum Continuous Heat Output	P_{max}	0.9378	kW
Auxiliary electricity consumption			
At nominal heat output	EL_{max}	N/A	kW
At minimum heat output	EL_{min}	N/A	kW
In standby mode	EL_{SB}	N/A	kW
Type of heat input for Electrical Storage Heaters only (select one)			
Manual heat charge control with integrated thermostat.			no
Manual heat charge control with room and/or outdoor temperature feedback.			no
Electronic heat charge control with room and/or outdoor temperature feedback			no
Fan assisted heat output			no
Type of heat output/room temperature control (select one)			
Single stage heat output and no room temperature control			no
Two or more manual stages, no room temperature control			no
With mechanical thermostat room temperature control			yes
With electronic room temperature control			no
Electronic room temperature control plus day timer			no
Electronic room temperature control plus week timer			no
Other control options (multiple selections possible)			
room temperature control with presence detection			no
room temperature control with open window detection			no
with distance control option			no
with adaptive start control			no
with working time limitation			no
with black bulb sensor			no
Contact Details	DOMU Brands Ltd, 6th Floor, The Tower, Deva City Office Park, Salford, M3 7BF		



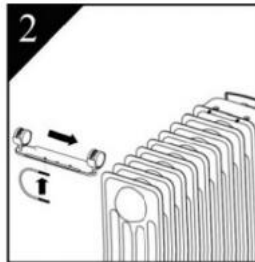
- 1- Radiator Fins
- 2- Power Switch
- 3- Adjustable Thermostat.
- 4- Front handle
- 5- Timer.
- 6- Cable Holder
- 7- Wheel Base (with U Hooks and Wings Nuts not pictured x2)
- 8 - Wheels

ASSEMBLY

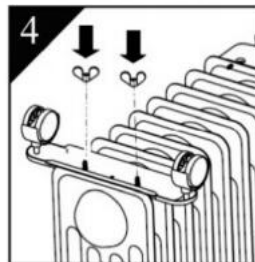
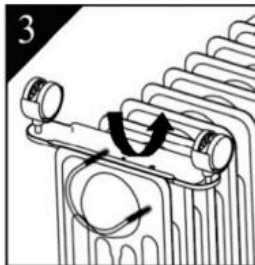
1. Turn the radiator upside-down on a scratch-free and stable surface to prevent damage to the paint finish or your floor surfacing (see Fig 1).



2. Fit the wheels assemblies onto the radiator by placing the U-shaped bolts between the outermost fins on each side of the radiator (see Fig.2 - 3).



4. Securely fasten the wheels assemblies onto the radiator by screwing the wing nuts onto the bolts (see Fig. 4).



OPERATION

1. Place the product in an upright position on a flat, steady, stable, heat-resistant surface. Make sure there is nothing flammable or heat sensitive within 1 meter (40 inches). Operating the product in any other position could cause a hazard.

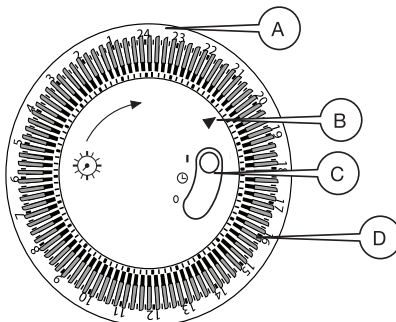
2. Insert the plug into a suitable wall outlet after turning the thermostat knob counter-clockwise to the minimum position(-) and setting the power switch to "0" for off. The heater is suitable for operation on an A.C. electricity supply having the same voltage as that show on its rating label.

3. Turn the power switch from "0" to either "•" (Minimum heating), "••" (Medium heating) or "•••" (Maximum heating).

4. Turn the thermostat knob clockwise to maximum position(+). When the room temperature rises to a comfortable level, slowly turn thermostat counter-clockwise until the indicator light just goes out. To adjust the room temperature turn the thermostat clockwise to raise the temperature, or counter-clockwise to lower it. Thus the heater will attempt to keep the room temperature at the desired level.

5. To turn off the heater, set the power switch to "0" position. Unplug the product from the electrical outlet when it is left unattended or is not in use.

TIMER



- A:** CLOCK (24 HOUR)
- B:** LIVE TIME ARROW
- C:** TIMER SWITCH
- D:** SEGMENTS

TIMER SETTING OPERATION

NOTE: This is a 24 hours timer.
There are 96 segments, each segment represents 15 mins.

1. Firstly, turn the clock “A” clockwise to align with arrow “B” to match the current time

2. Segments which are pushed outwards will represent the time where the heater will be turned ON. Segments which are pushed inwards will represent the time where the heater will be turned OFF.

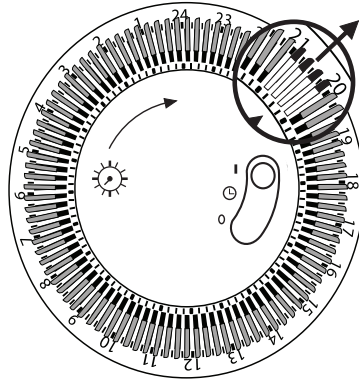


Fig 1

NOTE: To set the heater to turn on at 8pm and turn off at 9pm, push 4 segments between 20 and 21 outwards (Fig 1).

3. Move the timer switch to symbol “ ① ” to enable the timer (Fig 2).

4. If the timer switch is set at “1” position, the unit starts working non-stop ignoring any timer setting. If the timer switch is set at “0” position, the unit stays off ignoring any timer setting.

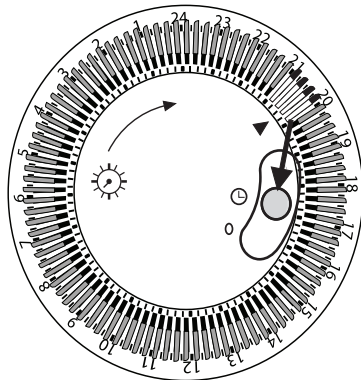


Fig 2

NOTES: The timer setting does not reset itself after the Unit has been switched off, but any time you unplug the Unit, the clock stops updating the live time and at next turn-on the live time must be set again as indicated in point “1”.

SAFETY FEATURES

This Radiator is fitted with an overheat protection switch (thermal cut-out) which will power off the appliance automatically in case of overheating. Should this occur, unplug the appliance and allow to cool fully for approximately 30 minutes.

Follow the operation instructions to restart the appliance after removing the source of the overheating (poor ventilation, item covering the Radiator etc.). The Radiator should function normally. Should the problem persist, please contact DOMU Brands Customer Services.

To avoid damage and to regulate the temperature, this Radiator is fitted with a thermostatic safety device. The safety device will activate and cut out the power to the Radiator once a certain temperature is reached. The Radiator will start again once the temperature has lowered.

The Radiator is also fitted with a tip switch which will cut off the power to the Radiator if it is knocked over. Should this happen, disconnect at the mains and allow to cool fully before attempting to move the Radiator. Inspect the Radiator for damage. If - and only if - the Radiator is free from damage, plug back into the mains. The Radiator should function normally.

MAINTENANCE

CAUTION: Switch off the Radiator and disconnect the from the power socket. Wait for the Radiator to cool completely before cleaning.

Vacuum-clean the Vents to remove dust from these areas.

To remove dust on external surfaces, wipe the Radiator with a damp (not wet) lint-free cloth rinsed in hot soapy water only.

CAUTION: Do not use any harsh detergent or abrasive cleaners.

WARNING! Do not spray with liquids or submerge in any liquid or water.

WARNING! Do not attempt to clean the inside of the Radiator. Do not attempt to open the casing at any time. There are no user-serviceable parts.

TROUBLESHOOTING

PROBLEM	SOLUTION
THE RADIATOR WILL NOT POWER ON	<p>Ensure the Radiator is switched on and connected to mains power.</p> <p>Activate the Power Selector Switches and Thermostat Knob.</p> <p>Check the fuse by replacement.</p>
THE RADIATOR IS NOT HEATING UP	<p>Check that the Radiator is plugged in and switched on at the mains outlet.</p> <p>Make sure that the Radiator has not gone into overheat protection mode (see 'Safety Features').</p> <p>The Vents may require need cleaning.</p>
THE RADIATOR BECOMES DAMAGED	<p>Do not use and contact DOMU Brands Customer Services.</p>



DISPOSAL INFORMATION Please recycle where facilities exist. Check with your local authority for recycling advice.

CUSTOMER SERVICE If you are having difficulty using this product and require support, please contact support@domu.co.uk

WARRANTY To register your product and find out if you qualify for a free extended warranty please go to www.vonhaus.com/warranty. Please retain a proof of purchase receipt or statement as proof of the purchase date. The warranty only applies if the product is used solely in the manner indicated in the warnings page of this manual, and all other instructions have been followed accurately. Any abuse of the product or the manner in which it is used will invalidate the warranty. Returned goods will not be accepted unless re-packaged in its original packaging and accompanied by a relevant and completed returns form. This does not affect your statutory rights. No rights are given under this warranty to a person acquiring the appliance second-hand or for commercial or communal use.

COPYRIGHT All material in this instruction manual are copyrighted by DOMU Brands. Any unauthorised use may violate worldwide copyright, trademark, and other laws.

THANK YOU

Thank you for purchasing your product/appliance. Should you require further assistance with your purchase, you can contact us at

support@domu.co.uk

VonHaus is a registered trademark of DOMU Brands Ltd. Made in China for DOMU Brands. Unit 30, Stakehill Industrial Estate, Middleton, Manchester M24 2RW. Authorised Representative: Authorised Representative Service, 77 Camden Street Lower, Dublin, D02 XE80, Ireland.