

2500875



Please read all instructions carefully before use and retain for future reference.



Disconnect appliance from mains before cleaning, maintenance or after a thermal cut out event.



Do not cover.



CAUTION Do not immerse in water.



Do not use outdoors.



INTENDED USE.

This Dehumidifier is for indoor domestic use only. Do not use outdoors or on wet surfaces.

This appliance is not intended for use by persons (including children) with reduced physical, sensory or mental capabilities, or lack of experience and knowledge, unless they have been given supervision or instruction concerning use of the appliance by a person responsible for their safety.

GENERAL PRECAUTIONS.

When using an electrical appliance, basic precautions should always be followed, including the following:

Do not allow to be used as a toy. Close attention is necessary when used near children. Children should be supervised to ensure that they do not play with the appliance.

If the appliance is not functioning properly, has been dropped, damaged, left outdoors, or immersed in liquid, do not use, contact DOMU Brands Customer Services. Do not use the appliance if any parts appear to be faulty, missing or damaged.

Ensure all parts are securely attached before using the appliance.

CABLES AND PLUGS.

Check to ensure your electricity supply matches that shown on the rating plate. The appliance must only be used as rated.

Ensure the unit is disconnected from the main outlet before cleaning.

The use of an extension cable is not recommended.

Do not let cord hang over the edge of the table or counter-top where it could be pulled on inadvertently by children or pets, or touch hot surfaces which could damage the cord.

Do not pull the cable around sharp edges or corners.

Keep the cord away from heated surfaces.

Turn off all controls before unplugging.

Do not unplug by pulling on cable. To unplug, grasp the adaptor, not the cable.

Ensure the cable is stored safely to prevent hazards.

The appliance shall be installed in accordance with local/national wire regulations.

If the supply cable is damaged, it must be replaced by a qualified engineer in order to avoid a hazard.

RISK OF PERSONAL INJURY.

Always locate your appliance away from the edge of any worktop, on a firm, flat, heat-resistant surface with sufficient space around all sides.

Ensure that the appliance is at room temperature before operating.

The appliance is not intended to be operated by means of an external timer or separate remote-control system. When using for the first time, your appliance may give off a 'new' smell and/or smoke. This will dissipate after a few uses.

Keep hair, loose clothing, fingers, and all parts of body away from openings and moving parts.

Do not insert any object into openings or cover the appliance.

Do not obstruct the air inlets/outlets of the appliance.

Do not use in the following locations:-

- Next to a source of fire
- An area where oil is likely to splash
- An area exposed to direct sunlight
- An area where water is likely to splash
- Laundry or wet rooms where the humidity is higher than 85% RH.
- Near a bath, shower or a swimming pool
- In a greenhouse
- An area where flammable gases or liquids are present

Do not dry laundry above the unit to prevent water entering the Dehumidifier.

Do not use in laundry rooms.

Position the unit so the plug is easily accessible.

Do not lift or move the appliance whilst in use.

Do not sit or stand on the unit.

Do not leave the appliance unattended when plugged in. Unplug from outlet when not in use, and before performing user maintenance, connecting or disconnecting attachments or changing accessories. Do not use means to accelerate the defrosting process. Do not operate continuously for periods longer than those marked on the product or indicated in the instructions.

Do not lubricate any parts, or carry out any maintenance or repair work other than that shown in this manual, or as advised by the DOMU Brands Customer Services.

Use only as described in this manual and do not exceed maximum capacity (1000ml).

The appliance shall be stored in a room without continuously operating ignition sources (for example, open flames, gas appliances and electric heaters).

Store so as to prevent mechanical damage from occurring.

Do not pierce or burn.

Be aware that refrigerants may not contain an odour.

The appliance should be installed, operated and stored in a room with a floor area larger than 4m².

The appliance shall be compliant with the national gas regulations.

Servicing shall be performed only as recommended by the manufacturer.

Any person who is involved with working on or breaking into a refrigerant circuit should hold a current, valid certificate from an industry-accredited assessment authority which authorises their competence to handle refrigerants safely in accordance with an industry recognised assessment specification.

Servicing shall only be performed as recommended by the equipment manufacturer. Maintenance and repair requiring the assistance of other skilled personnel, shall be carried out under the supervision of the person competent in the use of flammable refrigerants.

Use only DOMU Brands recommended attachments.

The appliance is filled with flammable gas R290.

Any repairs that are needed, please contact the nearest authorized service centre and strictly follow manufacturer's instructions only.

Failure to follow these instructions will invalidate any warranty.

Energy/Safety protection

Do not cover or restrict the air flow of the inlet/outlet grills.

For maximum performance ensure the minimum distance from walls or objects is be 20cm to ensure air circulation.

Keep filters and grills clean.

When in use do not open windows or doors.

Place the unit of a hard/fat

WARNING FOR DISPOSAL:

It is prohibited to dispose of this appliance in domestic household waste. For disposal there are several possibilities

Do not dispose this product as unsorted municipal waste. Collection of such waste separately for special treatment is necessary. The municipality has established collection systems, where electronic waste can be disposed of at least free of charge to the user. The manufacturer will take back the old appliance for disposal at least free of charge to the user.

As old products contain valuable resources.

They can be sold to scrap metal dealers..

Wild disposal of waste in forests and landscapes endangers your health when hazardous substances leak into the ground-water and find their way into the food chain. Meaning of crossed out wheeled dustbin.

Do not dispose of electrical appliances as unsorted municipal waste, use separate collection facilities contact your local government for information regarding the collection systems available. If electrical appliances are disposed of in landfills or dumps. Hazardous substances can leak into the groundwater and get into the food-chain, damaging your health and well-being.

The dehumidification capacity is rated at a room temperature of 30°C with a MAX relative humidity of 80%.

If specifications are improved after this pointing, the product nameplate will reflect the new specifications.

The operational temperature is in the range of 15°C to 50°C.

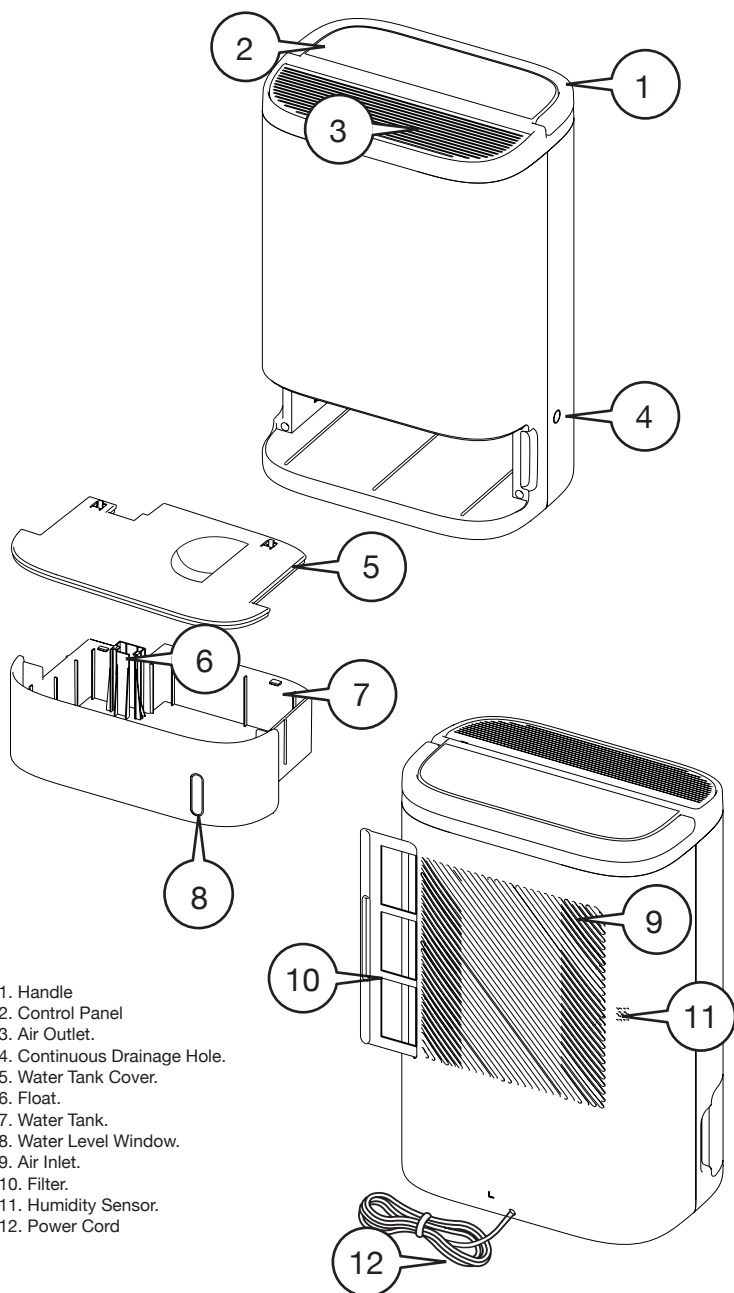
If the room temperature is outside of this range, the unit will not operate normally.

TECHNICAL SPECIFICATION

Input: 220-240V 50/60Hz

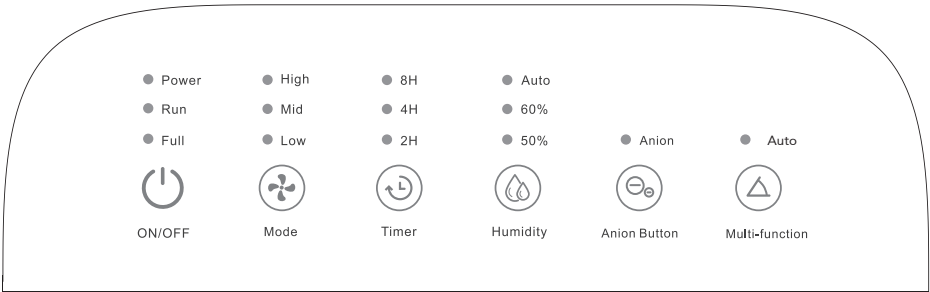
Rated Power: 650W

Working Capacity: 7L/D (30°C, RH80%)



1. Handle
2. Control Panel
3. Air Outlet.
4. Continuous Drainage Hole.
5. Water Tank Cover.
6. Float.
7. Water Tank.
8. Water Level Window.
9. Air Inlet.
10. Filter.
11. Humidity Sensor.
12. Power Cord

CONTROL PANEL



BASIC OPERATION

Connect the Power Cord to a suitable mains outlet.

All of the LED indicators will illuminate before extinguishing.

At the same time, a buzzer sound will be heard.

The Power Indicator will remain illuminated red.

POWER ON :

Press the button to switch the Unit on. The Unit will start dehumidifying and the wind deflectors will move up.



POWER OFF :

Press the Power Button again to switch the Unit off. The Power Indicator light will illuminate red and all other indicator lights will extinguish. The Unit will remain in operation for 4 minutes before powering down.



BUTTON OPERATION

1 - MODE SETTING :

Press the Mode Button to adjust the wind speed among Low, Mid and High mode.
The corresponding indicator illuminates.

Press the button again to start from the beginning.

Note - When the Unit dehumidifies in any humidity mode, the user can set the wind speed and time at will.

● High

● Mid

● Low



Mode

2 - HUMIDITY SETTING :

(1) Press the Humidity Button to dehumidify the condition of RH50%, RH60% or Auto. The corresponding indicator will illuminate.

Press the button again to start from the beginning.

(2) When the environmental humidity is lower than the setting humidity, the Unit will stop dehumidifying.

When the environmental humidity is higher than the setting humidity, the Unit will start dehumidifying again.

Note - When the Unit is in the status of automatic dehumidification, its operation wouldn't be effected by the change of environmental humidity.

● Auto

● 60%

● 50%



Humidity

3 - TIMING SHUTDOWN :

In the condition of working, press the Timer Button to set 2h, 4h and 8h timer or to cancel.

Press again to start from the beginning.

(1) The Unit will auto-off when the Water Tank is full even if the Unit is timing and the remaining time will still be recorded. After emptying the Water Tank, the Unit will keep working in remaining hours.

(2) When the Water Tank is NOT full, the function of timing could be set in any timer. If the Unit stops working or cuts off, it will need to be reset.

● 8H

● 4H

● 2H



Timer

4 - ANION BUTTON :

Press the Button to switch on Anion mode.

(Removes dust and smells by creating a static charge around the airborne contaminants that are floating around your room)

Press again to switch it off.

● Anion



Anion Button

5 - AUTO SETTING :

During operation, the position of the wind deflector can be adjusted using the Swing Button (fan setting).

Press the Button to set the Unit swing or stop at any angle within 70 degrees.

● Auto



Multi-function

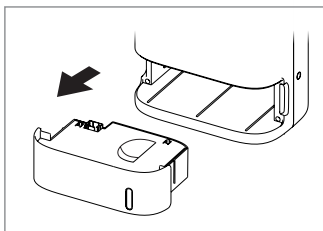
6 - ANTI-DUMP PROTECTION :

The Unit is equipped with an anti-tip switch which automatically switches the Unit off if it is tilted or tipped.

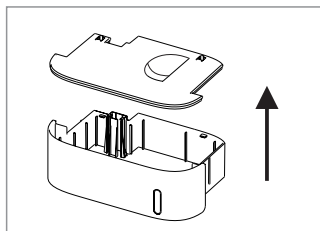
WATER TANK & WATER DISPOSAL

The Water Tank has a maximum capacity of 2.5L, with 7L working capacity. When the Tank is full, the Unit will stop dehumidifying immediately. The 'FULL' indicator will flash to indicate the Water Tank needs to be emptied.

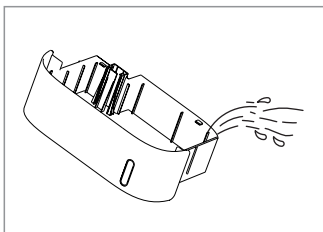
Turn off the machine, take out the water tank and pour out the water.



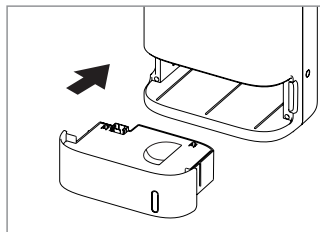
1. Take out the water tank.



2. Remove the water tank cover.



3. Pour water.



4. Reset the water tank and it will restart .

CONTINUOUS DRAINAGE

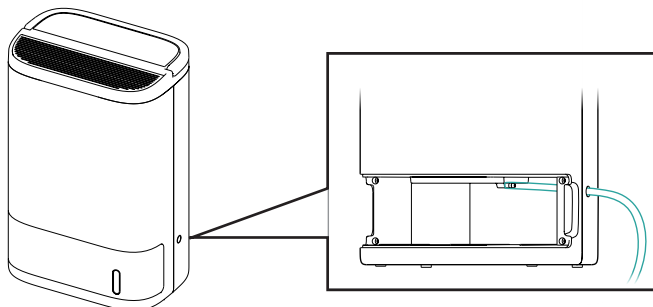
1- Turn of the Unit and remove the Water Tank.

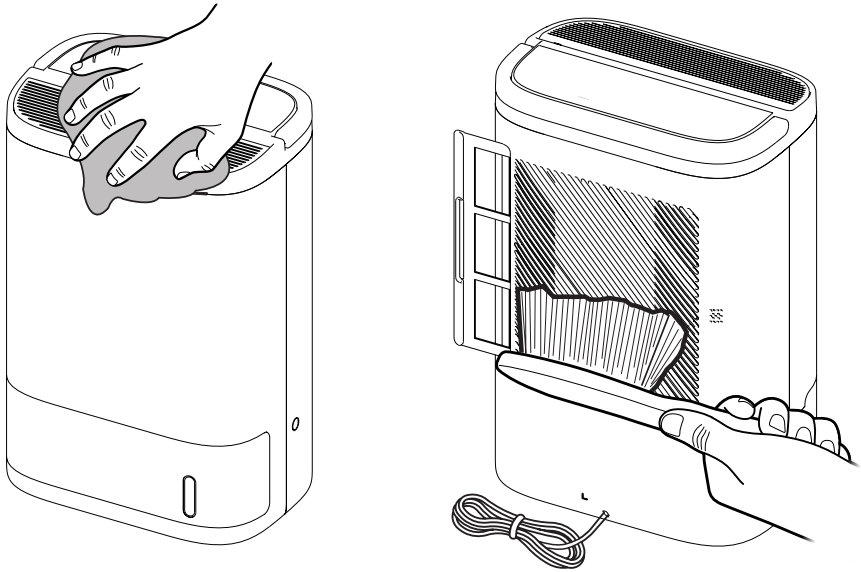
2- Cut off the plastic block that is plugging the Drainage Hole.

3 - Extend the drain pipe from inside the Unit, through the new Drainage Hole and into the Water Tank.

4 - After resetting the Water Tank, it will restart to dehumidify.

If you turn the Unit back on without resetting the Water Tank, the Unit will remain in a protective status (water full indicator will continue to flash)





- 1- Turn off the Unit and disconnect from the mains outlet.
- 2- Discard of any collected water in the Water Tank.
- 3- Wipe down the outer surfaces with a soft damp cloth to remove any dust.
- 4 - Brush or vacuum the Inlet/outlet vents if they are clogged with any dirt or dust.
- 5- Remove the filter and remove any dust with a brush or vacuum.
The filter can be washed in warm, soapy water and left to air dry.

IMPORTANT! Ensure the filter is completely dry before reinserting into the Unit.

TROUBLESHOOTING

No power to the unit	Power Cord may be damaged. Contact Customer services. Ensure Water Tank is not full before use.
Only small amounts of water being collected	Doors and windows may be open. Seal the room from external areas. Water Tank has not been fully inserted. Inlet blocked. Disconnect from mains outlet and remove blockage/ clean filter.
The unit leaks	Water Tank is full, empty tank and re-attach. The Unit is positioned on an uneven surface. Reposition to a suitable area.
Display is illuminated but unit does not operate.	The chosen RH level is higher than the RH level of the room. Reduce the setting.
Air Flow is weak.	Filter may be blocked. Use a vacuum to clear away any collected dust.
Unit is noisy	The Unit is positioned on an uneven surface. Reposition to a suitable area. Inner fan may be damaged. Contact Customer Service for assistance.
No water is being collected	The Unit is set to a lower level than the humidity in the room. Temperature too low for water extraction. Increase the temperature of the room. Check the Unit for blockages. Ensure the Unit is not too close to walls or furniture.



DISPOSAL INFORMATION Please recycle where facilities exist. Check with your local authority for recycling advice.

WARRANTY To register your product and find out if you qualify for a free extended warranty please go to **www.vonhaus.com/warranty**.

Please retain a proof of purchase receipt or statement as proof of the purchase date. The warranty only applies if the product is used solely in the manner indicated in the warnings page of this manual, and all other instructions have been followed accurately. Any abuse of the product or the manner in which it is used will invalidate the warranty. Returned goods will not be accepted unless re-packaged in its original packaging and accompanied by a relevant and completed returns form. This does not affect your statutory rights. No rights are given under this warranty to a person acquiring the appliance second-hand or for commercial or communal use.

COPYRIGHT All material in this instruction manual are copyrighted by DOMU Brands. Any unauthorised use may violate worldwide copyright, trademark, and other laws.

THANK YOU

Thank you for purchasing your product/appliance. Should you require further assistance with your purchase, you can contact us at **support@domu.co.uk**

VonHaus is a registered trademark of DOMU Brands Ltd.
Made in China for DOMU Brands. M24 2RW.