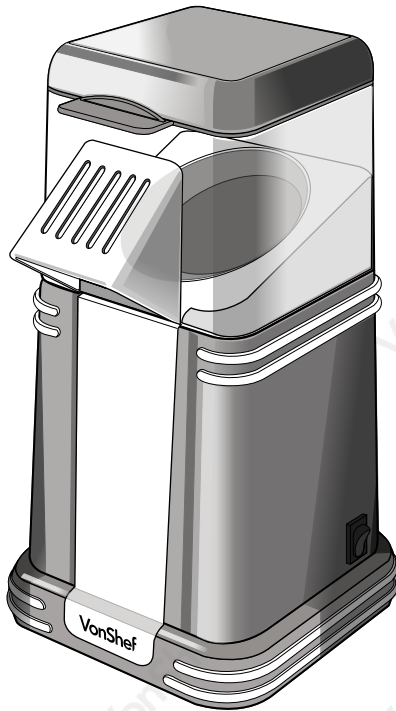


# RETRO POPCORN MAKER

2013261- Instruction Manual



# CONTENTS

---

|   |   |
|---|---|
| Safety Instructions                                   | 1 |
| Safety Instructions                                   | 2 |
| Specification   | 3 |
| Before First Use, Operation                           | 4 |
| Hints & Tips, Cleaning & Maintenance, Troubleshooting | 5 |
| Warranty  | 6 |

---

# SAFETY INSTRUCTIONS

---



## WARNING



PLEASE READ THESE INSTRUCTIONS CAREFULLY AND KEEP FOR FUTURE REFERENCE.

### INTENDED USE.

Only operate the VonShef® Retro Popcorn Maker for its intended purpose and within the parameters specified in this manual.

The Popcorn Maker is intended for indoor, domestic use only. Do not use outdoors or in commercial or industrial environments.

This appliance is not intended for use by persons with reduced physical, sensory or mental capabilities, or lack of experience and knowledge, unless supervised or given appropriate instruction concerning the product's use by a person responsible for their safety.

This appliance is not intended for use by children.

### GENERAL PRECAUTIONS.

When using an electrical appliance, basic precautions should always be followed, including the following:

Do not allow to be used as a toy. Children should be supervised to ensure they do not play with the appliance.

If the Popcorn Maker is not functioning properly, has been dropped, damaged, left outdoors, or immersed in liquid, do not use, contact DOMU Brands Customer Services.

Do not use the Popcorn Maker if any parts appear to be faulty, missing or damaged.

Ensure all parts are securely attached before use.

### CABLES AND PLUGS.

Check to ensure your electricity supply matches that shown on the rating plate. This product should only be used as rated. Preferably, the socket outlet should be protected by a Residual Current Device (RCD).

Do not use with a damaged cable or plug. If the supply cable is damaged, it must be replaced by a qualified engineer or authorised service agent in order to avoid a hazard.

The use of an extension cable is not recommended.

Do not handle the plug or appliance with wet hands.

Keep the cable away from heated surfaces.

Do not let the cable hang over the edge of the table or countertop where it could be pulled on inadvertently by children or pets.

Do not pull the cable around sharp edges or corners.

Do not leave unattended when plugged in. Unplug from outlet when not in use.

Turn off all controls before unplugging.

Do not unplug by pulling on the cable. To unplug, grasp the plug, not the cable.

Always unplug before performing user maintenance, connecting or disconnecting attachments, or changing accessories.

Ensure the cable is stored safely to prevent hazards.

# SAFETY INSTRUCTIONS

---



## WARNING



PLEASE READ THESE INSTRUCTIONS CAREFULLY AND KEEP FOR FUTURE REFERENCE.

### RISK OF PERSONAL INJURY.

Always locate your appliance away from the edge of the worktop, on a firm, flat, heat-resistant surface with sufficient space around all sides.

The Popcorn Maker is not intended to be operated by means of an external timer or separate remote-control system.

Do not exceed maximum capacity. Do not add more than the recommended amount of kernels to the Popping Chamber.

Never add butter directly to the aluminium Popping Chamber.

When using for the first time, your Popcorn Maker may give off a 'new' smell or vapour. This will dissipate after a few uses.

The Popcorn Maker will become hot during use. Do not touch the surface of the appliance during operation.

Do not insert any objects into openings or cover the appliance.

Keep hair, loose clothing, fingers and all parts of body away from openings and moving parts.

Keep hands and utensils out of the Popcorn Maker when in use.

Do not lift or move the Popcorn Maker whilst in use.

Do not leave the Popcorn Maker unattended when in use.

Do not operate continuously for periods longer than recommended in this manual. Allow to cool sufficiently between uses.

Allow 10-15 minutes between uses for the appliance to cool. This will minimise the risk of overheating.

Always allow the Popcorn Maker to cool completely before cleaning.

Do not lubricate any parts or carry out any maintenance or repair work other than that shown in this manual, or as advised by the DOMU Brands Customer Care Helpline.

Use only as described in this manual and with DOMU Brands recommended attachments only.

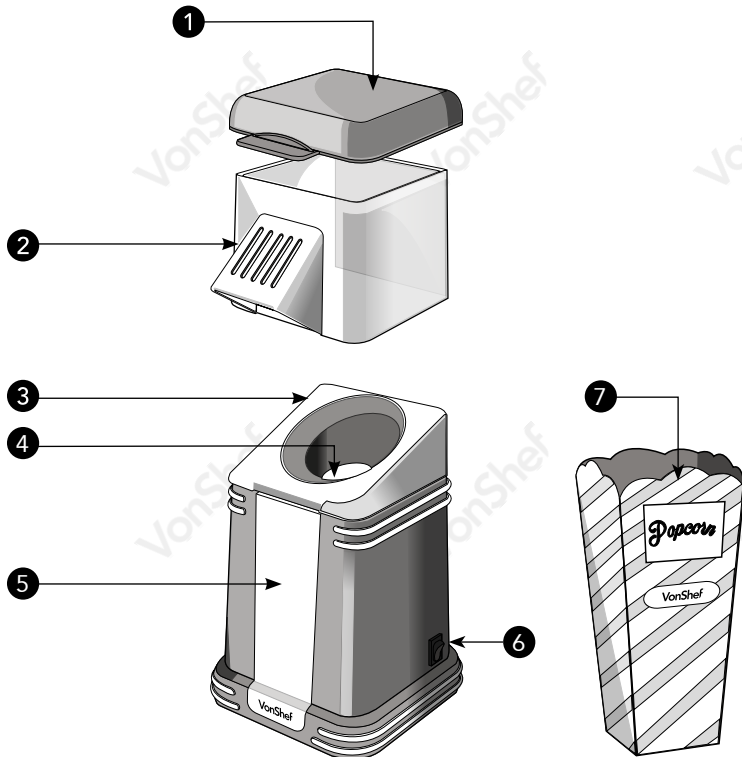


CAUTION: HOT SURFACES

# TECHNICAL SPECIFICATION

| VOLTAGE | RATED MAX POWER | RATED FREQUENCY |
|---------|-----------------|-----------------|
| V       | W               | Hz              |
| 220-240 | 1200            | 50              |

## PRODUCT SPECIFICATION



1. MEASURING CAP/LID.
2. TOP COVER/CHUTE.
3. CORN INLET.
4. POPPING CHAMBER.

5. BASE UNIT.
6. ON/OFF SWITCH.
7. SERVING BOXES (x6).

# BEFORE FIRST USE

Before using this appliance for the first time, please ensure you complete the following steps:

- Remove all packaging and labels.
- Inspect the product for any damage and check that all listed parts are included.



**WARNING!** Do not use the Popcorn Maker if any parts are missing or damaged.

- Before initial use, wash the **TOP COVER/CHUTE** with warm water and mild detergent. Dry thoroughly before assembly.

- The **MEASURING CAP/LID** can be wiped with a damp cloth. Ensure it is completely dry before measuring any popcorn.

- Wipe down the **BASE UNIT** using a clean damp cloth.



**WARNING!** Do not immerse the **BASE UNIT**, cord or plug in water or any other liquid.

## OPERATION

- Position the **BASE UNIT** on a stable, level, heat-resistant work surface.
- Attach the **TOP COVER/CHUTE** to the **BASE UNIT**, ensuring it is securely in place.
- Add 30g (1.5oz) of kernels (supplied) to the **MEASURING CAP/LID**.

**NOTE:** The Popcorn Maker is designed to pop one **MEASURING CAP/LID** of kernels per session and should never be operated with more (or less) than this amount. If more popcorn is required, allow the appliance to cool for several minutes before using again.

- Pour the kernels into the **POPPING CHAMBER**.

**CAUTION:** Do not add any other ingredients, such as oil, butter, margarine, salt or sugar, to the popcorn at this point as damage will occur within the **BASE UNIT**.

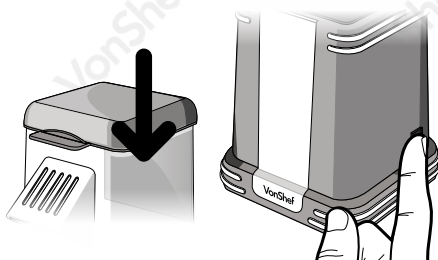
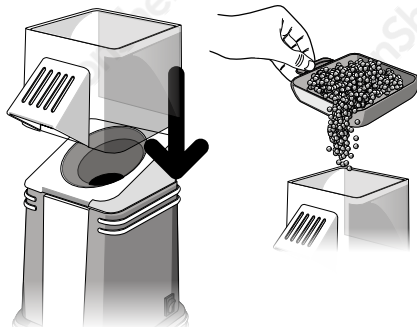
- Sit the **MEASURING CAP/LID** onto the **TOP COVER/CHUTE** and place a large bowl or container (not supplied) beneath the **CHUTE** before connecting the Popcorn Maker to a mains socket.
- Press the **ON/OFF SWITCH** to the 'ON' position to begin the popcorn making process.

**CAUTION:** Never remove the **MEASURING CAP/LID** or **TOP COVER** while the Popcorn Maker is in operation.

**CAUTION:** Do not touch the Popcorn Maker whilst in operation as surfaces will become hot.

- Once the correct temperature has been reached, the popcorn will begin popping and emerging through the **CHUTE**. After the popcorn making process is complete, switch off the unit using the **ON/OFF SWITCH** and unplug from the mains. Pour the popcorn into the **SERVING BOXES** and enjoy!

**IMPORTANT:** Allow the unit to cool for at least **10 minutes** before removing any un-popped corn and beginning another batch.



# HINTS & TIPS

- For a buttery batch of popcorn, melt a small amount of butter in a pan or microwavable bowl. Once melted, simply drizzle and enjoy!
- Another tasty way to enjoy your popcorn is to drizzle it with caramel, melted chocolate or, for a savoury option, sprinkle with cheese and chives.
- Once the pack of kernels has been opened, store in an air-tight container in a cool, dry area to keep them fresh.

## CLEANING & MAINTENANCE

**CAUTION:** Before carrying out cleaning or maintenance, disconnect the appliance from the mains and allow to cool.

- Remove the **MEASURING CAP/LID** and **TOP COVER/CHUTE** from the **BASE UNIT** and wash in warm, soapy water. Dry removable components thoroughly before storing and next use.
- Wipe the **BASE UNIT** using a slightly damp cloth and mild detergent if necessary.

**CAUTION:** Avoid using any abrasive cleaning materials to clean the **BASE UNIT** as this may damage the surface.

- To remove any dust or small pieces of kernels from the **POPPING CHAMBER**, use a dry and soft cloth to gently wipe the interior.



**WARNING!** Do not immerse the **BASE UNIT** in water or any other liquid to clean the **POPPING CHAMBER** as this will severely damage the product and cause injury to the user.

## TROUBLESHOOTING

| PROBLEM                      | SOLUTION   |
|------------------------------|--|
| POPCORN MAKER CUTS OUT       | <ul style="list-style-type: none"><li>• The Popcorn Maker is designed to make one batch of popcorn at a time. Continuous or excessive use will cause the appliance to overheat and the thermal cut-out will be activated. To avoid this, always allow the appliance to cool sufficiently between uses.</li></ul> |
| KERNELS ARE NOT BEING POPPED | <ul style="list-style-type: none"><li>• Too many kernels have been added to the <b>POPPING CHAMBER</b> causing some not to be cooked and dispensed. Use fewer kernels for your next batch - always use 1 <b>MEASURING CAP/LID</b> full as recommended.</li></ul>   |

# CUSTOMER SERVICES

---

If you are having difficulty using your product and require support, please contact:

**hello@domu.co.uk** or **usasupport@domubrand.com** as appropriate.

## DISPOSAL INFORMATION

---

Please recycle where facilities exist. Check with your local authority for recycling advice.

## WARRANTY

---

To register your product and find out if you qualify for a free extended warranty, go to:

**[www.VonShef.com/warranty](http://www.VonShef.com/warranty)**

Please retain a proof of purchase receipt or statement as proof of the purchase date.

The warranty only applies if the product is used solely in the manner indicated in this manual and all instructions have been followed accurately. Any abuse of the product or the manner in which it is used will invalidate the warranty.

Returned goods will not be accepted unless re-packaged in its original packaging and accompanied by a relevant and completed returns form. This does not affect your statutory rights.

No rights are given under this warranty to a person acquiring this appliance second-hand or for commercial or communal use.

## COPYRIGHT

---

All material in this instruction manual are copyrighted by DOMU Brands Ltd.

Any unauthorised use may violate worldwide copyright, trademark, and other laws.





Thank you for purchasing the Retro Popcorn Maker.

VonShef® is a registered trademark of DOMU Brands Ltd  
Made in China for DOMU Brands Ltd M24 2RW.

---